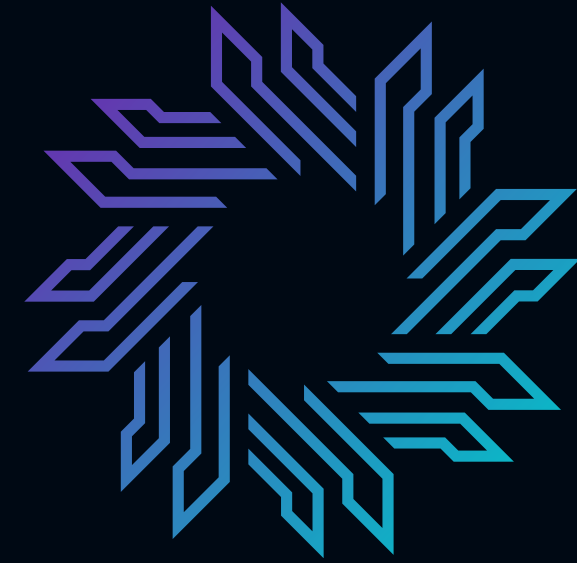
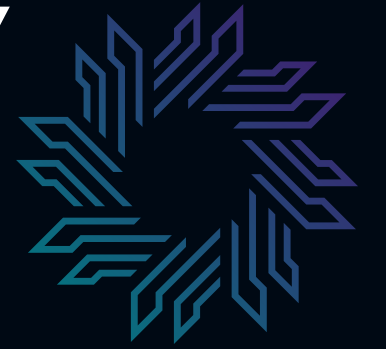


BIRLA INSTITUTE OF TECHNOLOGY

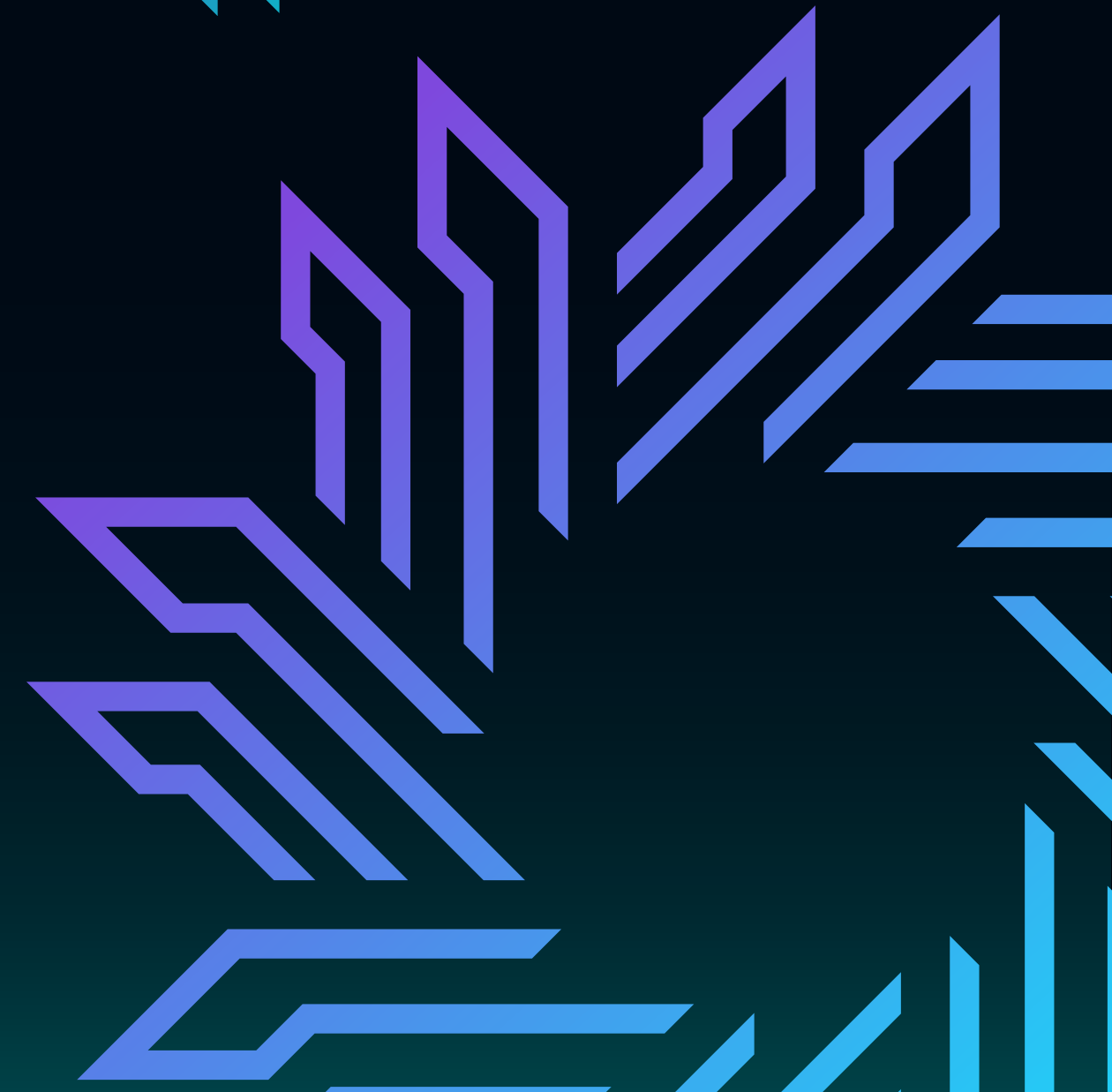
MESRA, RANCHI – 835215 | www.bitmesra.ac.in



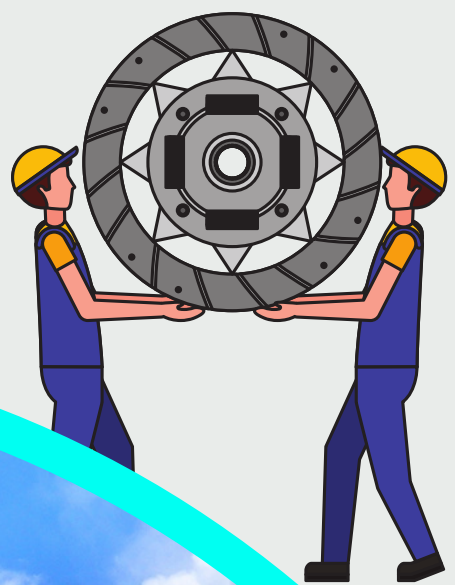
Placement Brochure

PRODUCTION ENGINEERING

Year: 2023–24



About the Department



Department of Production Engineering since its inception in 1964 has been trying to impart quality education to undergraduates and train them to meet the demands of the manufacturing industry. The department has established links with the industry, R&D organizations, consultancy organizations and academic institutes in the region in furtherance of the cause of manufacturing engineering. The department sees itself as a pathfinder of emerging technologies and techniques in the area of production engineering and develops students to be technologically and managerially sound to meet the challenges of the open market in the present era of globalization.

Programmes Offered

Undergraduate Programmes

- B.TECH in Production Engineering

Post Graduate Programmes

- M.TECH in Automated Manufacturing Systems





● Courses Offered ●

B.Tech

- Production Operation Management
- Logistics and Supply Chain Management
- Statistical Quality Control
- Foundry, Forming and Welding Technologies
- Engineering Economy, Costing and Accounting
- Design of Machine Elements
- Modelling and Simulation Lab
- Machine Drawing and CAD Lab
- Machine Tool Design
- Project Engineering
- Work System Design
- Operations Research

M.TECH

- Manufacturing Automation
- Modelling and Simulation
- Data Analytics
- Manufacturing Simulation Lab
- Robotics & Robot Applications
- Computer Integrated Manufacturing
- Soft Computing in Manufacturing Automation
- Autonomous Systems Lab
- Computer Aided Design & Drafting Laboratory

● Laboratories and Facilities ●



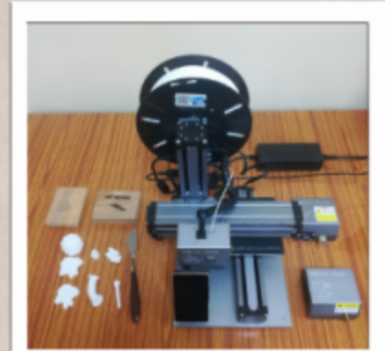
CNC LATHE



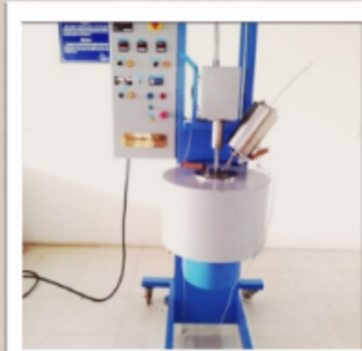
CNC SURFACE GRINDING



CNC AIR PLASMA



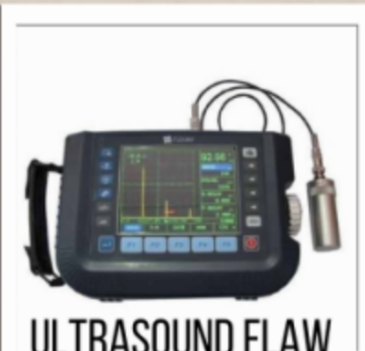
LASER ENGRAVER



STIR CASTING



DIAMOND SAW



ULTRASOUND FLAW
DETECTOR



SURFACE COAT

- FMS and Robotics
- Metrology
- Metallurgy
- Manufacturing Mechatronics
- Work Study & Ergonomics
- Metal forming
- Machine tool & Automation
- Non-Traditional Manufacturing
- Welding Shop
- Foundry Shop
- Forging Shop
- Pattern Making Shop

Research Areas



Research Areas

- Precision Forming
- Welding
- CAM and Rapid Prototyping
- Nontraditional manufacturing
- Metal Casting and Powder Metallurgy
- Metalworking Tribology
- Design of Manufacturing Systems
- Lean and sustainable Manufacturing
- Planning and scheduling in manufacturing environment
- Quality and reliability Engine
- Work Design and Human Factor Engineering.



Achievements

- Soumil Dutta qualified GRE in 2022.
- Madhukant Prince, Qualified GATE 2022 with AIR 224 from Production engineering and AIR 1427 from Mechanical Engineering Stream.
- Utkarsh qualified GATE 2022 with AIR 211 from Mechanical Engineering Stream.
- Amit Kumar secured AIR 179 (PI) in GATE 2021.
- Three students have won Campus Innovathon 2020 which was organized by Gilbarco Veeder Root India and has bagged 2nd Place with a cash prize and PPI offers.
- Jyoti won the Tata Steel Mind Over Matter Spark The Innovation Season 6 (2019) organized by Tata Steel.
- Aditya Kumar Lal and Aditya Singh secured first rank all over India in Deloitte Technoutsav CCTC 2019. They got a cash prize and PPOs in Deloitte US India.
- Shreya won the Mind Over Matter annual innovation challenge organised by TATA STEEL.
- Aditya Singh got the first rank in the zone and was awarded with a cash prize.
- Aastha Sah member of Team Compact stood second in the business conclave at IIM Bangalore.
- Students received PPI opportunities by finishing in Top teams in ZS Campus beats challenge held by ZS Associates.
- Four students got selected as a summer research intern at Illinois Institute of Technology, Chicago.

Few of Our Recruiters

- Bain & Company **BAIN & COMPANY** 
- Deloitte **Deloitte.**
- Miebach Consulting **miebach** 
the supply chain engineers
- Flipkart **Flipkart** 
- BOX8 **BOX8**
- PwC  **pwc**
- ZS Associates  **ZS**
- Oracle **ORACLE**®
- TATA  **TATA**
- Tech Mahindra **TECH mahindra**
- Volvo Group India 
- Maruti Suzuki  **MARUTI SUZUKI**

Few of Our Recruiters

- Reliance Industries Ltd. 
- Kantar Group 
- Axis Bank 
- BYJU'S 
- TATA Steel 
- ITC Limited 
- CEAT Specialty Tyres Ltd 
- JSW Steel 
- Oracle 
- EXL Service 
- Dr. Reddy's Laboratories 
- Paypal 



Thank You

Our Contact

☎ : +91651-2275566

🌐 : www.bitmesra.ac.in

📍 : Mesra, Ranchi

✉ : tnp_stuco05@bitmesra.ac.in
tnp_stuco06@bitmesra.ac.in