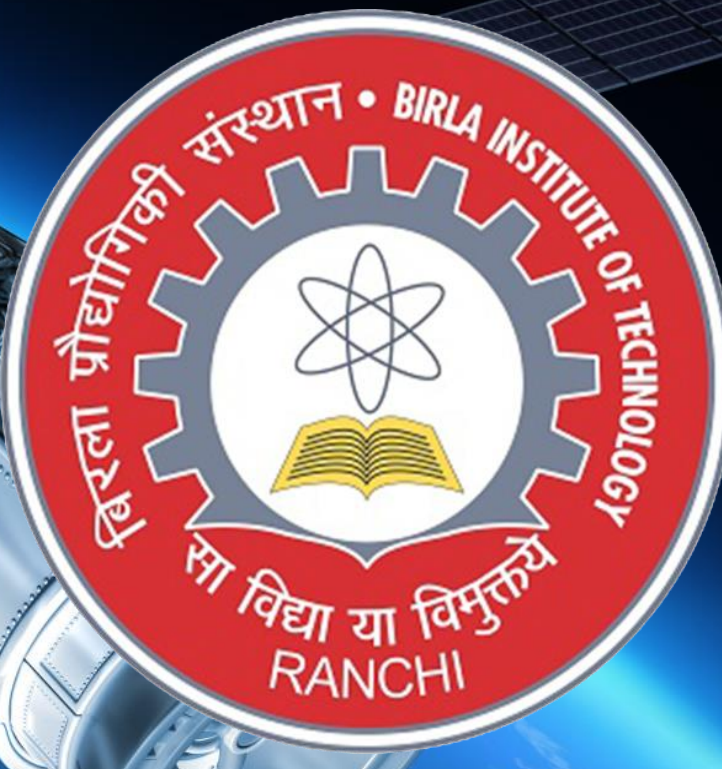
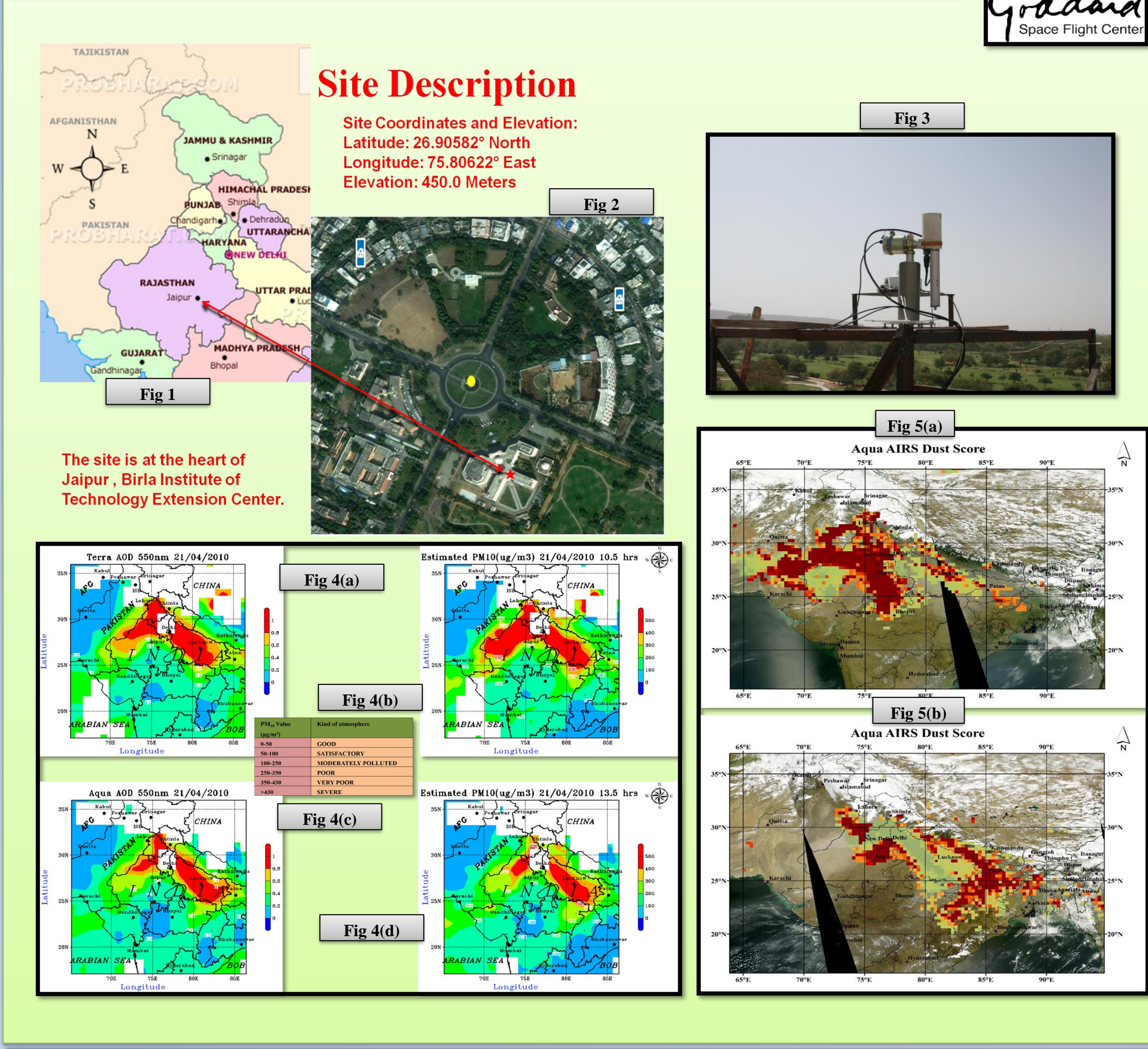


# ATMOSPHERIC REMOTE SENSING

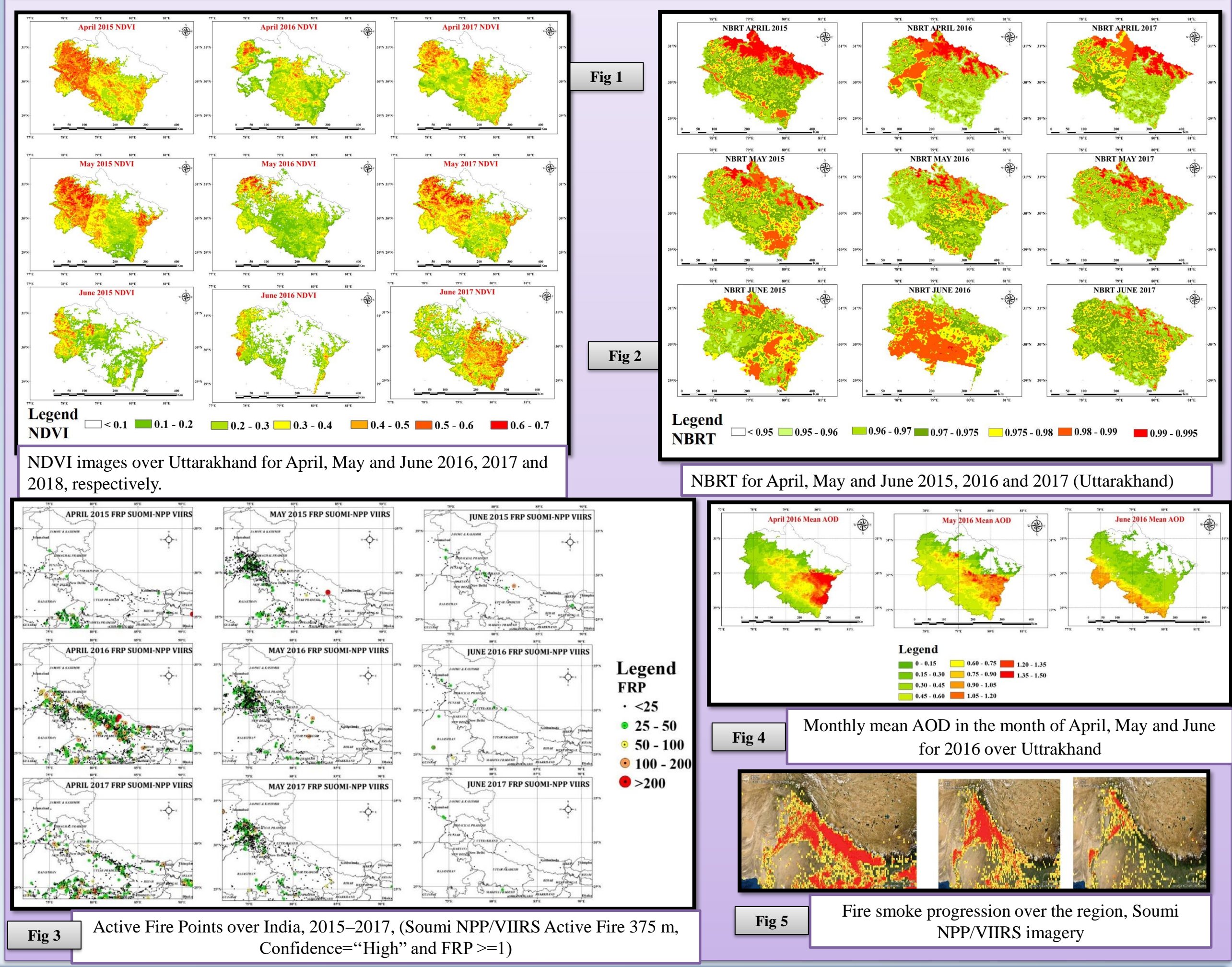
@ Department of Remote Sensing



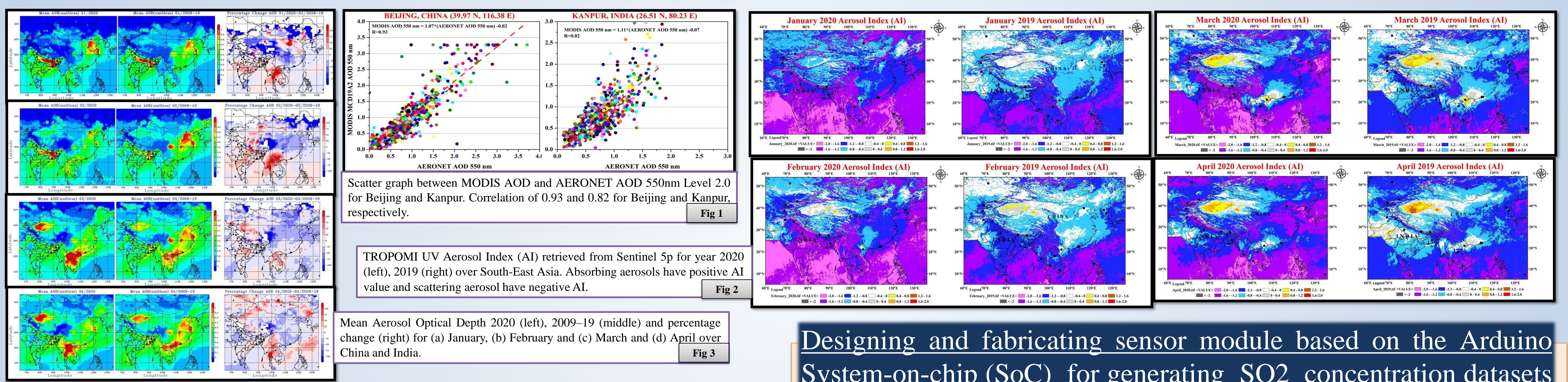
## MoU for Aerosol Robotic Network between GSFC, NASA, USA and BIT Mesra



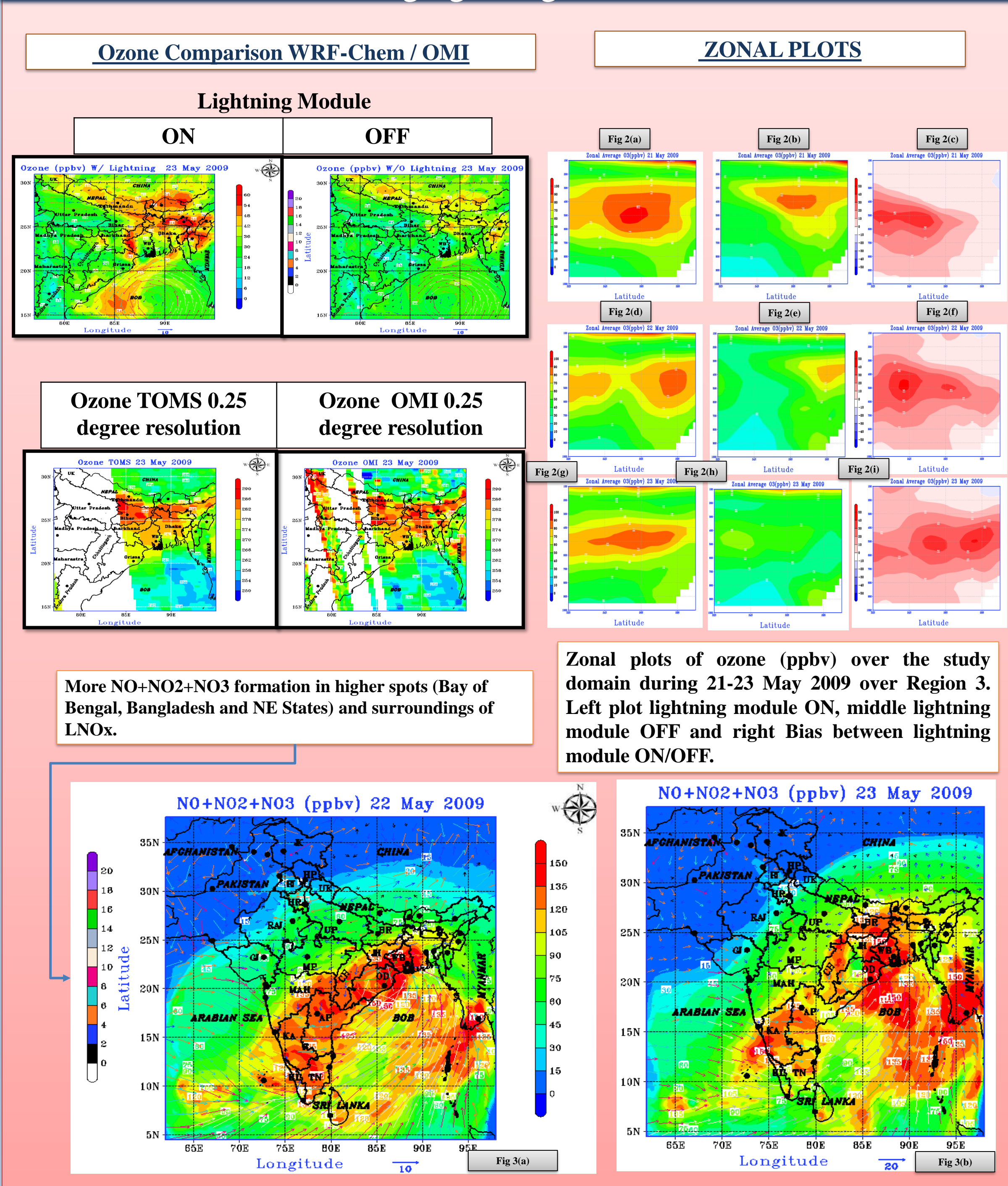
## Characterizing aerosols during forest fires over Uttarakhand region in India using multi-satellite remote sensing data



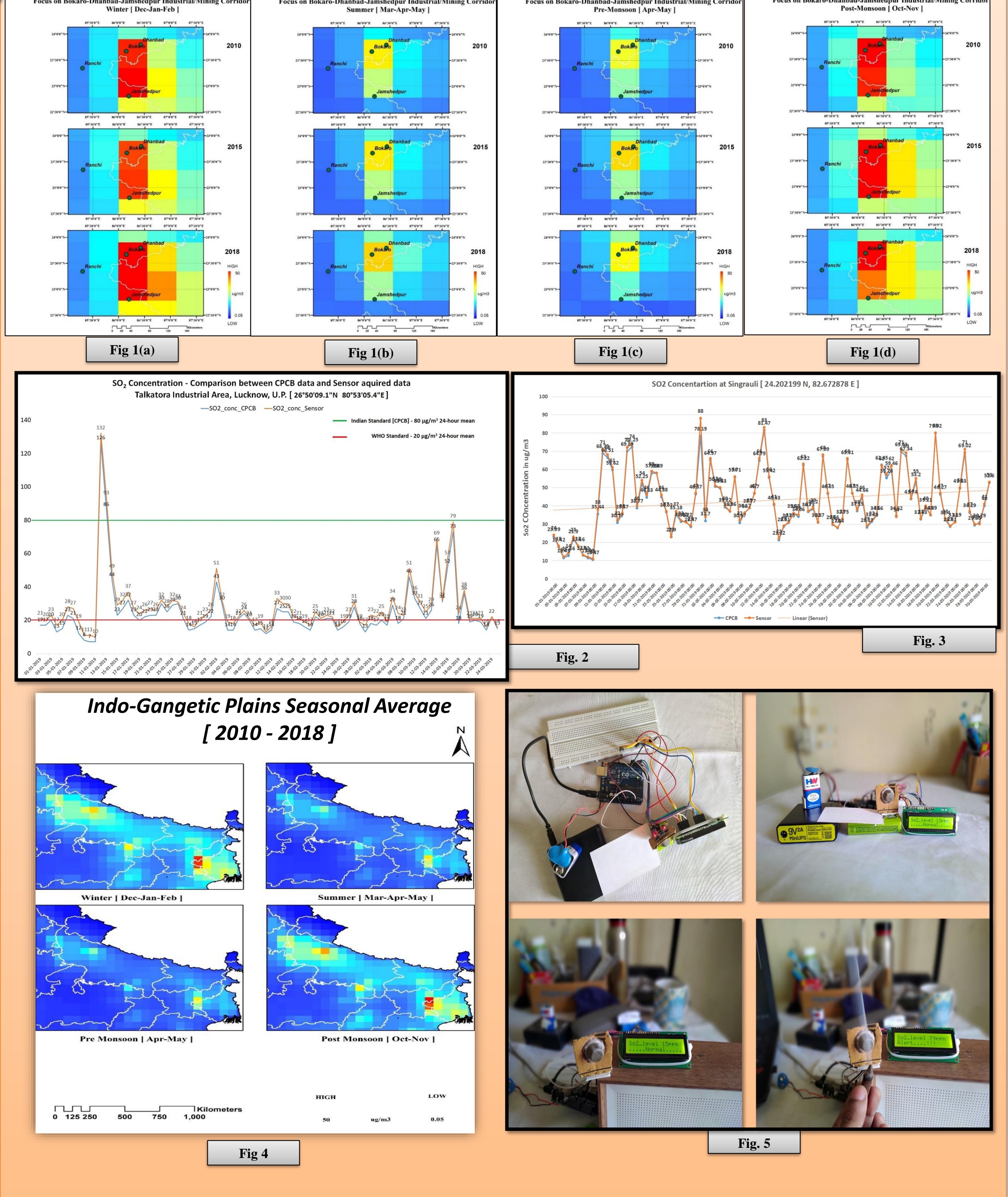
## Impact of COVID-19 on the Air Quality over China and India Using Long-term (2009-2020) Multisatellite Data



## Estimation of Ozone during lightning event in Pre-Monsoon Season



## Designing and fabricating sensor module based on the Arduino System-on-chip (SoC) for generating SO2 concentration datasets from the atmosphere



### References

Sunita Verma<sup>a,b</sup>, Manish Soni<sup>c,d</sup>, Harshbardhan Kumar<sup>e,f</sup>, Swagata Payra<sup>g,h</sup>, Manoj K Mishra<sup>f</sup>, Rohini Bhawan<sup>g</sup>  
 a IESD, Banaras Hindu University, Varanasi, India  
 b DST-Mahamana Centre of Excellence in Climate Change Research, Banaras Hindu University, Varanasi, India  
 c Department of Remote Sensing, Birla Institute of Technology Mesra, Ranchi, India  
 d (AcSIR), Ghaziabad, India  
 e CSIR-National Institute of Oceanography, Goa, India  
 f Space Application Centre, Indian Space Research Organization, Ahmedabad, India  
 g Department of Atmospheric and Space Sciences, Savitribai Phule Pune University, Pune, India  
 h Institute for the Environment, The University of North Carolina at Chapel Hill, Chapel Hill, NC, USA

Dr. Swagata Payra, Associate Professor, Department of Remote Sensing, BIT Mesra, Ranchi.

Manish Soni<sup>1</sup>, Sunita Verma<sup>2,3\*</sup>, Hiren Jethava<sup>4</sup>, Swagata Payra<sup>1</sup>, Lok Lamsal<sup>4</sup>, Priyanshu Gupta<sup>2</sup>, Janhavi Singh<sup>2</sup>

Swagata Payra<sup>1\*</sup>, Manish Soni<sup>1</sup> and Sunita Verma<sup>2</sup>  
<sup>1</sup>Department of Remote Sensing, BIT Mesra, Jaipur Campus, Rajasthan India.  
<sup>2</sup>IESD, Banaras Hindu University, Varanasi, Uttar Pradesh, India

Shubham Singh<sup>1</sup>, Richa Sharma<sup>1</sup>  
<sup>1</sup>Department of Remote Sensing, BIT Mesra, Ranchi, India