

ICCI 2026

The 3rd International Conference on Computational Intelligence 2026

**10-12
September, 2026**

**09:30 AM – 05:30 PM
(GMT+5:30)**

About BIT, Mesra

Birla Institute of Technology (BIT), Mesra, Established in 1955, is a Premier Technical Institute in India Known for Academic Excellence and Innovation. The Department of Computer Science and Engineering (CSE) is a Center of Advanced Learning, offering Undergraduate, Postgraduate, and Doctoral Programs in Artificial Intelligence, Machine Learning, Data Science, Cybersecurity, and High-Performance Computing.

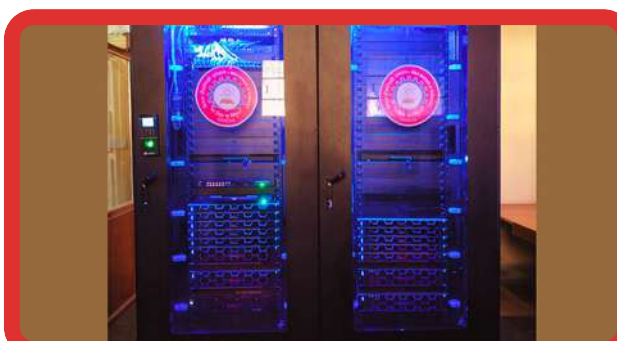
Theme

Machine Learning for Geospatial Analytics

Conference will Focus on The Application of Machine Learning Techniques Integrated with Geographic Information Systems (GIS), Spatial Data Analysis, Remote Sensing, Environmental Monitoring, and Urban Planning.

About Conference

The 3rd International Conference on Computational Intelligence (ICCI 2026): Machine Learning for Geospatial Analytics is set to be organized by the Department of Computer Science and Engineering, Birla Institute of Technology, Mesra, Ranchi. Supported by the Department of Science and Technology (DST) under the Promotion of University Research and Scientific Excellence (PURSE) scheme.



Call for Papers

The International Conference on Machine Learning for Geospatial Analytics (ICCI 2026) invites the submission of original research articles, visionary concepts, and practical case studies from academia, industry, and research and development organizations. The conference serves as a multidisciplinary forum for the exchange of ideas and the discussion of recent innovations, emerging challenges, and future directions in advanced computing systems, intelligent technologies, and engineering applications that are shaping the digital era.

Call for Proposal to Host Special Session at ICCI 2026

The call for proposal to host special session for ICCI 2026 is now open. Each organized special session should have a minimum of 06 registered papers. The session organizers have full authority in soliciting and accepting papers for the session. An Honorarium of will be provided to the session organizer (please note that a minimum of 06 papers should be registered and presented (either online or offline) to run a special session).

Publications

The proceedings of ICCI 2026 will be published by Taylor & Francis and will be submitted for indexing to SCOPUS. Indexed version on of some of the selected papers will be recommended for publication in SCI/SCIE/SCOPUS indexed journals.

Registration Fee

For Indian Author :
₹ 10,000 /person






For Other Country :
\$275 /person



Tracks (Not Limited to)

- Soft Computing for Geospatial Applications
- Swarm and Evolutionary Computing for Geospatial Applications
- Image Processing and Cognition System for Geospatial Application.
- Data Mining for Geospatial Applications
- Intelligent System Design and Modelling for Geospatial Applications
- Interdisciplinary Applications

Important Dates

-  **Call for Papers**
25th January, 2026
-  **Submission Closing Date**
30th April, 2026
-  **Paper Acceptance Intimation**
15th July, 2026.
-  **Camera Ready Paper Submission**
10th August, 2026
-  **Registration Start Date**
25th August, 2026

About Conference

Scan for More
Details About
Conference
<https://icci.bitmesra.ac.in>



Conference Venue

Research & Development Building,
BIT Mesra, Ranchi, Jharkhand, India



Patron

Prof. Indranil Manna
Vice Chancellor, BIT Mesra

Program Chair

Prof. Abhijit Mustafi
HOD, Dept. of CSE, BIT Mesra

Conveners

- Dr. Sudip Kumar Sahana
- Dr. Debjani Mustafi

Co-Conveners

- Prof. Sandip Dutta
- Dr. Shamama Anwar

Advisory Chairs

- Prof. Supratim Biswas
- Prof. Ujjwal Moulik
- Prof. Rajkumar Buyya
- Prof. Rajib Shourey
- Prof. Kalyanmoy Deb
- Prof. Subhashish Choudhury
- Prof. Sanghamitra Bandyopadhyay