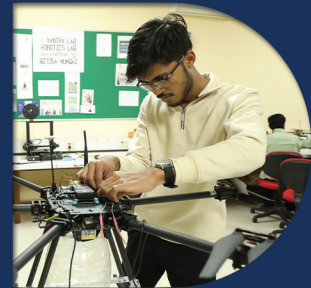
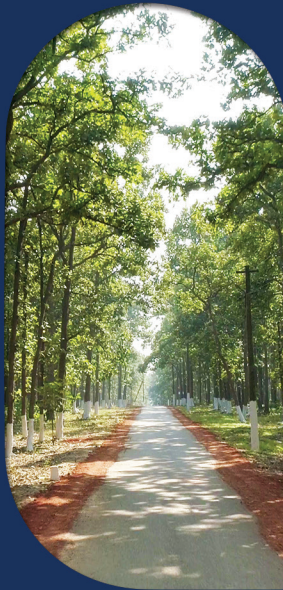




*i*NFORMATION BROCHURE 2025

BIRLA INSTITUTE OF TECHNOLOGY MESRA
RANCHI - 835215



A legacy of leadership

Established in 1955 by the visionary industrialist Mr. B.M. Birla, BIT Mesra was founded with a clear vision to offer its young minds a space, where their imagination could take wings and their ideas fruition. For over 6 decades now, the institute has nurtured minds with a rich heritage of academic excellence, developing learning frameworks that have been well ahead of times.





Content

02

[From the desk of the Vice- Chancellor](#)

11

[Code of Conduct for the Students](#)

25

[Scholarships under National Scholarship Portal](#)

04

[Applauding Accomplishment](#)

12

[Guidelines to the Newly Admitted Students](#)

28

[Training & Placement Division](#)

05

[Campus Biodiversity](#)

14

[Academic Administrative Structure](#)

32

[Our Proud Recruiters](#)

06

[Life at Campus](#)

16

[Duties / Responsibilities Assigned](#)

36

[MoU, Internship and Collaborations](#)

07

[Sports Complex](#)

19

[Grading System](#)

38

[Institute Map](#)

08

[Clubs and Societies](#)

21

[Notable Alumni](#)

39

[HODs](#)

From the Desk of the Vice Chancellor

Socrates said 'education is kindling the flame and not merely filling up of a vessel'. The professed motto of BIT Mesra says "SĀ Vidyā YĀ Vimuktaye" (Education liberates). Truly, education lays the foundation of knowledge building.



JOHAR! Welcome to the Birla Institute of Technology (BIT) Mesra, one of the oldest Institutes of Technology in independent India, founded in 1955 by the visionary industrialist and philanthropist Mr. B.M. Birla. BIT Mesra is located in Ranchi, the capital of the State of Jharkhand, the mineral hub and abode of serene beauty of natural forests, mountains and waterfalls. The Institute was blessed by the Honourable President of India on 15th Feb 2025 in a special event to mark the Platinum Jubilee of BIT Mesra, in these seven decades of its glorious existence, this Institute, recognized by the University Grants Commission (UGC) as a Deemed to be a University in 1986 under section 3 of the UGC Act 1956, has emerged as one of the top most self-financed or private Engineering Institutions catering to both traditional engineering disciplines and emerging technological domains with firm foundation in fundamental sciences and orientation toward modern innovations and applications.

It is a matter of pride that we were the first in the nation to establish a Department of Space Engineering and Rocketry in 1964 equipped with static rocket test firing facility to augment the national space mission, ahead of ISRO. BIT initiated the concept of small manufacturing enterprises as spin off from Engineering departments in 1970s by establishing the Small Industries Research and Development Organization (SIRDO). Possibly this is the first example of Science and Technological Entrepreneurs Park (STEP) in the country subsequently conceptualized and established by the Government of India in several IITs and Universities. The concept of STEP aligns well with the vision of the Honourable Prime Minister advocating for entrepreneurship through the "Start Up and Stand Up India" campaign.

No wonder that most of the popular magazines in India rate BIT Mesra within the top 5 Engineering Institutions in the private category.

The main campus of BIT in the outskirts of Ranchi at Mesra is spread over approximately 780 acres of a well laid out township with adequate civil infrastructure of buildings, offices, laboratories, health centers, roads, parks and social amenities in the midst of a generous spread of lush green natural sal forest located at the confluence of Subarnarekha and Jumar rivers. The iconic two-storied main building offers over 3 lakh square feet of covered area with approximately

the same area available in other academic buildings around it making up the rest of the academic campus offering classrooms, faculty and administrative offices, seminar and conference halls, laboratories and workshops, and modern lecture theatres distributed among nearly 20 Departments and Centres. The Mesra campus consists of 14 student hostels to accommodate over 4500 students and scholars, family housing for over 500 faculty and staff members, a commercial complex and multiple shopping centres, a primary health centre, a dedicated 33 kVA electrical sub-station, and a modern water filtration plant to supply drinking water. The campus is secured with natural and constructed boundary equipped with digital surveillance and security patrolling. The sports complex of the institute spreads over 25 acres of land being used every day by the students and staff for physical training, games and sports and various extracurricular activities. The sports complex consists of a standard athletic track along with badminton hall, multi-gym facility, volleyball and basketball court, hockey ground, football field, kabaddi court, netball court, kho-kho field, cricket stadium, lawn tennis court, gymnasium hall and recess centre. The campus houses two state-of-the-art auditoriums, namely G.P. Birla Auditorium with 3000 seating capacity and CAT Auditorium with 300 seating capacity. Both are routinely used for cultural and societal events and engineering conferences and seminars at the national and international level organized by and for the students and academic community.

The academic program of the Institute comprises nearly 20 Departments and Centres with active support from modern and sophisticated research facilities like High Performance and Desktop Computing Laboratory, Central Instrumentation Facility, Central CAD Laboratory, Central Workshop with machine, foundry and fabrication facilities, Design and Architecture Studios, Teaching and Specialized Research Laboratories and Language laboratory.

BIT Mesra is fully aligned to and compliant with NEP 2020. The Institute adopted the Choice Based Credit System (CBCS) in conformity with the UGC and AICTE guideline from 2018 providing academic flexibilities to select courses from a basket of Core subjects and Open Electives offered by Engineering, Sciences, Humanities and Social Sciences (including Management) programs. Academic progress is assessed regular in multiple ways using relative grading system.

Students are allowed to register for a few courses at other reputed universities or Massive Open Online Course (MOOC) platform of reputed universities. The Institute regularly organizes review, revision and upgradation of the teaching courses and academic curriculum through wide consultation with all the stakeholders including the Board of Studies (BoS) of each Department.

Traditionally, BIT has always promoted hands-on training with emphasis on experiential and participative learning and encouraged the students to indulge in real-world problem-solving exercises and methodologies. In this connection, regular industrial visits, field visits, industrial internship, practical assignments and model development are organized and encouraged through formal curriculum as well as activities of the technical clubs and societies. BIT Mesra adopted a novel practice of inculcating research bent of mind in the students by providing them the privilege of an alumni and Institute supported program called Immersive Summer Research Experience in reputed US Universities.

The Institute has decided to invest heavily in augmenting and modernizing its civil and digital infrastructure, and recruit new faculty and staff members in phases. BIT Mesra has started a new academic program in Quantitative Economics and Data Sciences, change the name and scope of a number exiting Departments and Courses, and substantially improve the research facilities in several disciplines. This is needed as BIT Mesra has a strong foothold in research activities with a large number of sponsored research projects with funding from ISRO, DST, DRDO, BRNS, ICMR, CSIR, AICTE, ICSSR, Rural Development, etc. In the recent past more than 60 external funded R & D projects worth about Rs. 30 Crore have been initiated at BIT Mesra with funding from DST, SERB, DBT, MoE, etc.

BIT Mesra is poised to heavily investing in infrastructures (both civil and digital) covering new hostels, faculty and staff housing, roads and civic amenities, sports facilities and above all, a new academic tower of approximate the same floor area but in vertical (G+6) alignment to accommodate new lecture halls, laboratories, tutorial and meeting rooms, faculty offices, digital library facility and student amenity centres. Nearly 100 new faculty members in various Departments at different levels have been added in the last 3-4 years. This fortification practice will continue. The Institute is NAAC accredited. More than 80% of the UG and 50% of the PG level courses are NBA approved. All external campuses in Jaipur, Noida, Patna and Deoghar are AICTE and UGC approved. The student placement level is comparable to the top Engineering Institutions of the country. Seminars and Conferences on contemporary topics are routinely organized. Skill enhancement and special training courses are arranged periodically for the benefit of our own and scholars from neighbouring institutions, and research scholars working in the number of sponsored research projects have significantly increased. Several new analytical and characterization equipment have been installed to enhance research capabilities. In brief, BIT Mesra is ready to author a new chapter of growth, opportunity, and prosperity.

As an Engineering Institution with a chequered history of over six decades, BIT Mesra has a huge list of illustrious alumni.

The Institute has its own Alumni Association, BITMAA (BIT Mesra Alumni Association), monitored and supported by the office of the Dean of Alumni & International Relations and supported by the various Alumni Associations in India and abroad. The activities are directed at alumni engagement, recognition, outreach and fund raising.

Socrates said 'education is kindling the flame and not merely filling up of a vessel'. The professed motto of BIT Mesra says "SĀ VidyĀ YĀ Vimuktaye" (Education liberates). Truly, education lays the foundation of knowledge building. In a technological university like BIT Mesra, it is obvious that we pursue knowledge in either of the two ways: dissemination by teaching, or creation through research. These are not divorced but intricately interrelated and complementary approaches. Engineering education carries a distinctly different characteristic than the common perception about the philosophy of teaching in other disciplines. If science is all about 'know why?' irrespective of whether such knowledge is useful immediately or in future, only devoted to establishing a precise truth about a natural phenomenon or entity beyond doubt; engineering is simply 'know how?', meaning how can the fundamental knowledge of 'know why' be translated and utilized to create useful solutions and answers to human aspirations and challenges that eventually should benefit the society and humanity at large.

At BIT Mesra, we firmly believe and practice the above philosophy that we have an obligation to the profession, society and nation that can be best realized by imparting quality engineering education, enabling the pupils with confidence and conviction, and above all, creating characters of steel with burning desire to perform and contribute, pursue excellence in profession and conduct life with a pure heart filled with compassion, dedication, discipline and ethics.

JAI HIND!

PROFESSOR INDRANIL MANNA

FTWAS, FNA, FNAE, FNASc, FASc, MAPAM, FIE(I), FIIM, FEMSI, FAScT, PRS, DSc (hc), PhD

Vice Chancellor

Birla Institute of Technology Mesra Ranchi, Jharkhand 835215, INDIA

Former President, Indian National Academy of Engineering

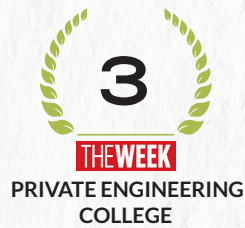
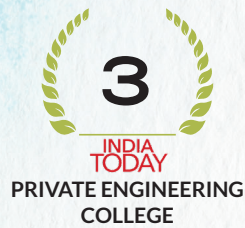
Vice President, Indian National Science Academy, New Delhi

[on lien from: Indian Institute of Technology Kharagpur]

Applauding Accomplishment

NAAC - A Grade

All India Ranking - 2024



NIRF - 2024



QS Rankings 2025



Times Higher Education 2025



World University Rankings by Subject:





Campus Biodiversity

BIT Mesra has a panoramic lush green campus of 780 acres intricately knitted with myriad hues of brilliant colors in different seasons throughout the year. The Institution campus presents a plethora of diversity both in terms of floral and faunal wealth. Floral species include herbs, shrubs, creepers and tree species in abundance. Similarly avifaunal diversity of the campus is also noteworthy in different seasons round the year along with a considerable diversity of invertebrates and vertebrates.

In 2021, an initiative was taken to carry out a biodiversity assessment of the campus and consequently a team of experts within the Institution documented a floral biodiversity register of the campus including a total number of 265 plant species belonging to 82 plant families along with 36 bird species. The plant species identified possess several utilitarian values including use as ornamental plant or gardening, efficient in environmental management and phytoremediation, use in cloth dye, cuisine, thatch, construction timber, soap making, leather tanning, perfumery, flavoring, fuel and detergent, cosmetics etc. use as edible plant and ayurvedic uses.



Life at Campus

The BIT Campus is completely residential with 12 hostels for boys and 2 hostels for girls. Spacious and beautiful, the lodgings are laid out amidst lush greenery.

Male and female students are provided with well furnished accommodation as per the available infrastructure. Wide verandas of the hotels encourage impromptu discussions and act as “thinking spaces”, while the natural surroundings instill a sense of peace and quiet.

The hostels are a hub of student activities. Students are encouraged to pursue a wide range of extra curricular activities and hobbies in their free time. Inter-hostel tournaments of indoor and outdoor games, quizzes, competitions and adventure trips are very popular at BIT Mesra.

Highlight: The ‘Hostel Night’ organized by resident students is a memorable yearly event where students interact with the faculty members amidst cultural programmes and a lot of fun in a shared mood of festivity.

Since its inception in 1955, Birla Institute of Technology, Mesra, Ranchi has been imparting quality education to the students of various discipline such as Pharmaceutical Sciences, Management, Hotel Management & Catering Technology, Bioengineering & Biotechnology, Chemical Engineering etc. It is mandatory for all the students to stay in the Hostel during their course of study.

The hostels have their own mess which is run by the student’s body. All the hostels have their own TV hall, reading rooms, indoors sports hall, guest hall and common rooms. The students are provided with the internet facilities in their rooms. All the hostels have the outdoor sports facilities consisting of Volley ball and Badminton courts.

Currently seven hostels (H1, 2, 3, 4, 8, 9 and 10) have complete wi-fi facility. All the Hostels have their individual team of Wardens and Assistant Wardens who are available 24 x 7 to help the students in case of any emergency.

The Institute also has more than 30 students clubs / societies for the development of students in the area of cultural and technical activities. All the clubs / societies have their own students body and is guided by one Faculty advisor. Every year the Institute organizes an Athletic meet, Technical event PANTHEON and Cultural event BITOTSAV. It is expected that the students joining our esteemed Institute will definitely have a very comfortable stay.



COMMON FACILITIES

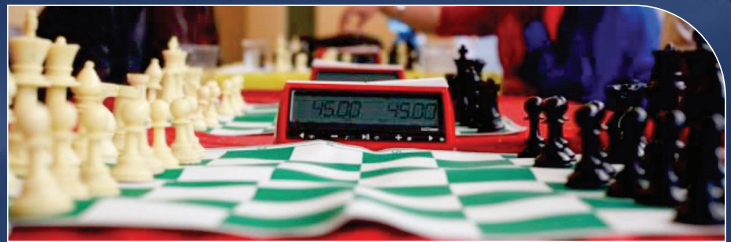
- Dining Halls and Independent Mess Halls in every hostel, completely run and managed by the students themselves.
- Common Rooms with provision for indoor games
- Reading Rooms with a large number of magazines, periodicals and newspapers
- Entertainment Halls with Colour Televisions



Sports Complex, BIT Mesra

Sports complex of the institute covers around 1 lakh 10 thousand square meter, approximately (24 acres). The students who are residing inside the campus are using the sports complex for physical fitness, mental fitness, social interaction, and recreation purposes. The facilities provided in sports complex are :

◆ Athletic Track 400-meter
◆ Badminton Courts (Indoor)
◆ Basketball Courts
◆ Cricket Ground
◆ Football Ground
◆ Hockey Ground
◆ GYM Hall
◆ Multi GYM
◆ Kabaddi
◆ Kho-Kho
◆ Table Tennis
◆ Chess
◆ Lawn Tennis
◆ Throw Ball
◆ Handball



- ◆ GYM hall has dimension of 80 feet x 50 feet used for PT & Games classes during Monsoon & Spring session.
- ◆ Multi Gym area is 1400 square feet having 'A' class facilities with latest equipment's. Badminton Indoor Hall is used for practice & conducting the Inter hostel & University Tournaments.
- ◆ Physical Education & Sports Department organizes Inter Hostel tournaments and conducts Annual Athletic Meet every year.
- ◆ The Department takes the responsibility of preparing the teams for Intramural & Extramural Tournaments. Institute teams also participates in Inter University AIU sponsored tournaments every year at various places.
- ◆ Physical Education & Sports Department organizes Chetan Devraj East Zone Inter Technical Memorial Cricket Tournament in which only technical institutions are allowed to participate.

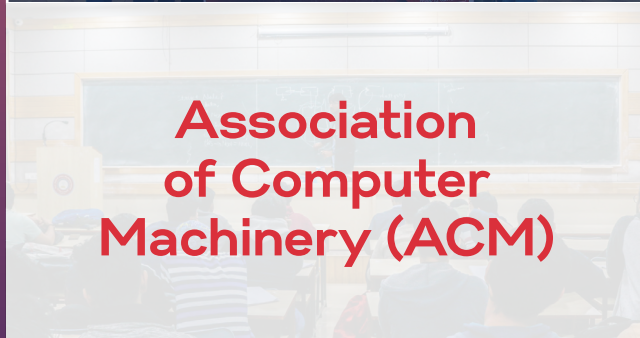
Clubs and Societies



National Service Scheme (NSS)



National Cadet Corps (NCC), BIT Mesra



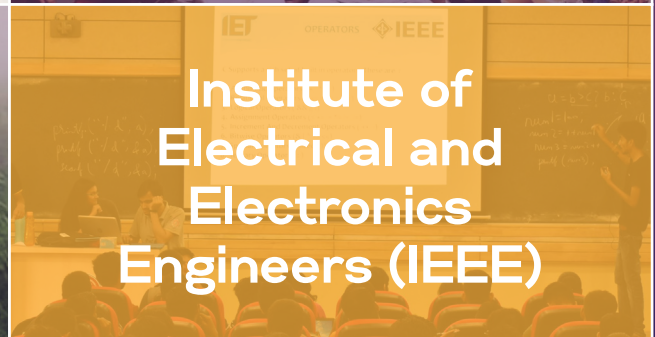
Association of Computer Machinery (ACM)



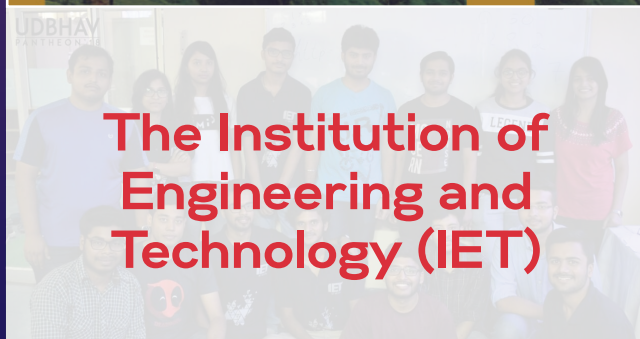
Entrepreneurship Development Cell (EDC)



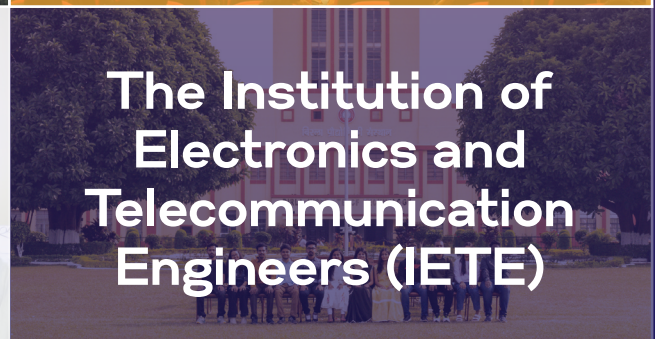
Environment Protection and Awareness Club (EPAC)



Institute of Electrical and Electronics Engineers (IEEE)



The Institution of Engineering and Technology (IET)



The Institution of Electronics and Telecommunication Engineers (IETE)



Robolution



Team Firebolt Racing



Team Srijan



Team Aveon



Dance Club



Music Club



Dramatics Society



Fine Arts Society (FAS)



Leo Club



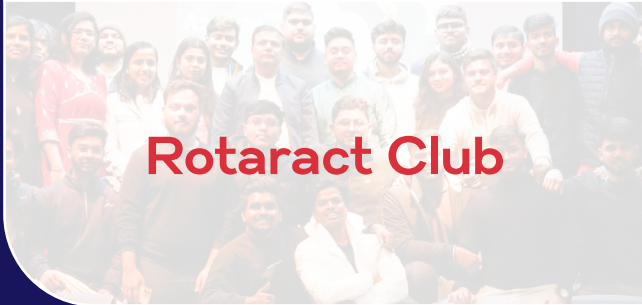
Literary Society (LitSoc)



News and Publication Society (NAPS)



Photographic Society (PSOC)



Rotaract Club



Sports and Adventure Club



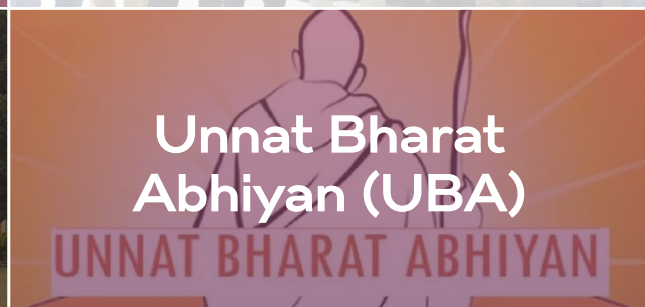
UNESQUO



Aerospace Society



Society for Industrial Management and Engineering (SIME)



Unnat Bharat Abhiyan (UBA)

UNNAT BHARAT ABHIYAN



Society for Data Science (SDS)



Finance Club



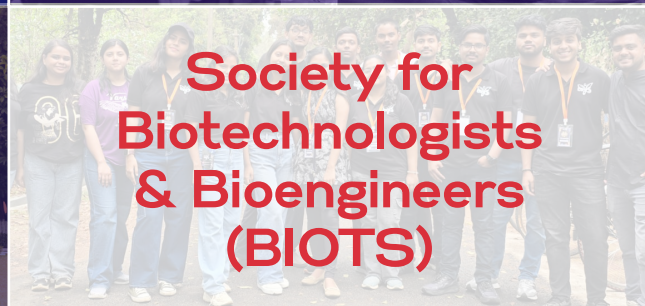
180 Degree Consulting



IE(I) Civil



Indian Institute of Chemical Engineers (IICChE)



Society for Biotechnologists & Bioengineers (BIOTS)



SPIC-MACAY



YUVA Tourism Club



Code of Conduct for the Students

1. **Students should not get involved in ragging.** If anyone is found to be involved in any case of ragging, he / she will be severely punished even leading to the outright expulsion from the Institute.
2. Students should not furnish false statement / information of any kind in the form for admission or for award of scholarship / freeship etc. Also, they should not submit any forged / fake documents / certificates within the Institute or outside the Institute.
3. Students should have the courtesy and decorum and should not resort to indecent behavior anywhere within or outside the campus.
4. Students should not willfully damage or stealthily remove any property / belongings of the Institute / hostel / fellow students.
5. **Possession, consumption, or distribution of alcoholic drinks or any kind of hallucinogenic drugs is strictly prohibited.** If anyone is found to be involved in any such case, he / she will be severely punished even leading to the outright expulsion from the Institute.
6. Students should not adopt unfair means in the examination.
7. They should not organize or participate in any group activity in company with others within the campus or outside without prior permission of the Dean of Student Affairs.
8. Mutilation or unauthorized possession of library books will attract disciplinary action.
9. Students should not resort to noisy and unseemly behavior and should not disturb studies of fellow students.
10. Students should not misuse Internet / e-mail facilities. Any tampering / hacking with servers anywhere in the Institute / hostel will be dealt sternly.
11. Every student is required to stay in one of the hostels in the Institute Campus. Under exceptional circumstances, the Dean of Student Affairs may permit a student to stay outside the campus on a temporary basis.
12. Students must stay in the allotted room. They should not change the room on their own.
13. Students must sign in the attendance sheet / register daily in their respective hostels. Any absence, even for a day from the Institute / hostel must be intimated properly to the hostel office in advance.
14. **Students should not drive or possess any power-driven vehicles (scooters / motorcycles / cars etc.) either inside or outside the campus. Anyone violating this rule will be punished severely and their vehicle will be seized.**
15. Every student must carry/ wear identity card. They should show their identity cards to the authorized persons whenever they are asked to do so.
16. Every student must abide by the mess timings applicable in his or her hostel.
17. Students must take their meal in the dining hall. No room service is allowed. If a student is sick, then he/ she should be admitted in the Institute Hospital. Food will be provided in the Hospital from the respective hostel.
18. No guest will be served food in the hostel mess without prior permission from the Warden.
19. Outside food is not permissible in the hostel premises.
20. Students must clear their mess dues, if any by 15th of every month.
21. The Institute provides general security of the premises; however, it is the responsibility of the student to safeguard his or her belongings. They are advised to use good quality locks. They should close the window and lock the door properly when they are going out. They are advised not to keep any valuable items in the hostel room.
22. **Students should wear decent formal dresses in the Institute as well as in the dining hall of the hostel.** Dress code is applicable for certain laboratory classes / workshop / NCC / HMCT / Management.
23. No married accommodation is provided to any student.

24. Students should make their rooms available whenever required for maintenance works.
25. It is the responsibility of the students to safeguard all fitting and fixtures in the hostels. For any damage or loss of property in the hostel, the Warden may impose fine on the concerned student(s) or the entire lobby / hostel. The amount of fine shall be more than the cost of damage made.
26. The ceiling fan, tube light and other electrical gadgets should be switched off before leaving the room.
27. The use of electric heater in the room is strictly prohibited.
28. The television room and common room will be open till 10 pm and the students must maintain proper decorum in the common room.
29. In the girls' hostels, the male visitors are not allowed. However, the father can meet his daughter in the visitor's room.
30. No female is allowed to stay in the boys' hostels. Similarly, no male member is allowed to stay in girls' hostels.
31. All students must follow the in-time in their respective hostels as notified from time to time.
32. **The in time for all students residing in hostels is 9.00 pm.**
33. **Late hour entry (after 10:00 pm) in the Institute campus is not allowed.** However, under special circumstances with valid grounds late hour entry in the Institute campus may be allowed. The student must produce his/her Identity card at the Institute Entry Gate.



Failing to obey the Code of Conduct may lead to strict disciplinary actions even leading to the outright expulsion from the Institute.

Guidelines to the Newly Admitted Students

The first year UG and PG Students (2025 Batch) should report to the campus as per the schedule notified by the Dean of AAC. All UG and PG Students will be provided hostel facility. The following guidelines / information may be helpful to the newly admitted students.

1. The academic activities will be conducted as per the Academic Calendar notified by the Dean of UGS and the Dean of PGS.
2. The hostel rooms are semi-furnished and are having steel cot, study table, chair, ceiling fan, and light in the room. The students will have to arrange the bedding (mattress, bed sheet, pillow, blanket, mosquito net etc.) at their own. They can bring it from their home or purchase from the shops available in the campus. Temporary shops may be arranged within the hostel for this purpose.
3. The Institute is residential, and the students are required to stay in one of the hostels. Under exceptional circumstances, the Dean of Student Affairs may permit a student to stay outside the Institute campus on a temporary basis.
4. If there is any case of ragging, the concerned student should report the same to Hostel Warden / Associate Dean (Student Affairs) / Dean of Student Affairs immediately.
5. Every hostel has its own mess attached to its building. The mess is run by a student body is named

as “BIT Welfare Society (BITWS)” which a registered society having 13 students in its Governing Body and the Dean of Student Affairs as its Patron. The monthly mess bill is calculated as per the actual expenditure in that hostel which also includes the salary overhead of mess workers.

6. The newly admitted students will be required to deposit hostel mess caution money and mess advance in BITWS Mess Account. The hostel mess caution money of Rs. 5,000 is one-time payment and will be refunded to the student after the completion of the programme. At the time of registration in every semester, the students are required to pay a suitable mess advance (currently, Rs. 30,000) in addition to the Institute Fee. The hostel seat rent is a part of the Institute Fee. The mess advance is credited to the student’s mess account, which is maintained centrally for every student. The students can log in to their mess account and view the details on the website of BITWS.
7. The Institute is having three shopping arenas, where shops of BIT Consumers Co-operative Stores (BITCCS) and a few private shops exist. The main shopping arena is near the G.P. Birla Auditorium. One shopping arena is behind the Institute Main Building. Another shopping arena is situated behind Hostel – 6. In addition to these, there are BITCCS sale counters in the girls’ hostels.
8. The Institute campus is having branches of State Bank of India and UCO Bank. The campus is also having ATMs of State Bank of India, UCO Bank, and ICICI Bank.
9. Sports complex is situated opposite to Hostel – 7. Students are encouraged to use the Sports Complex and participate in various sports activities.

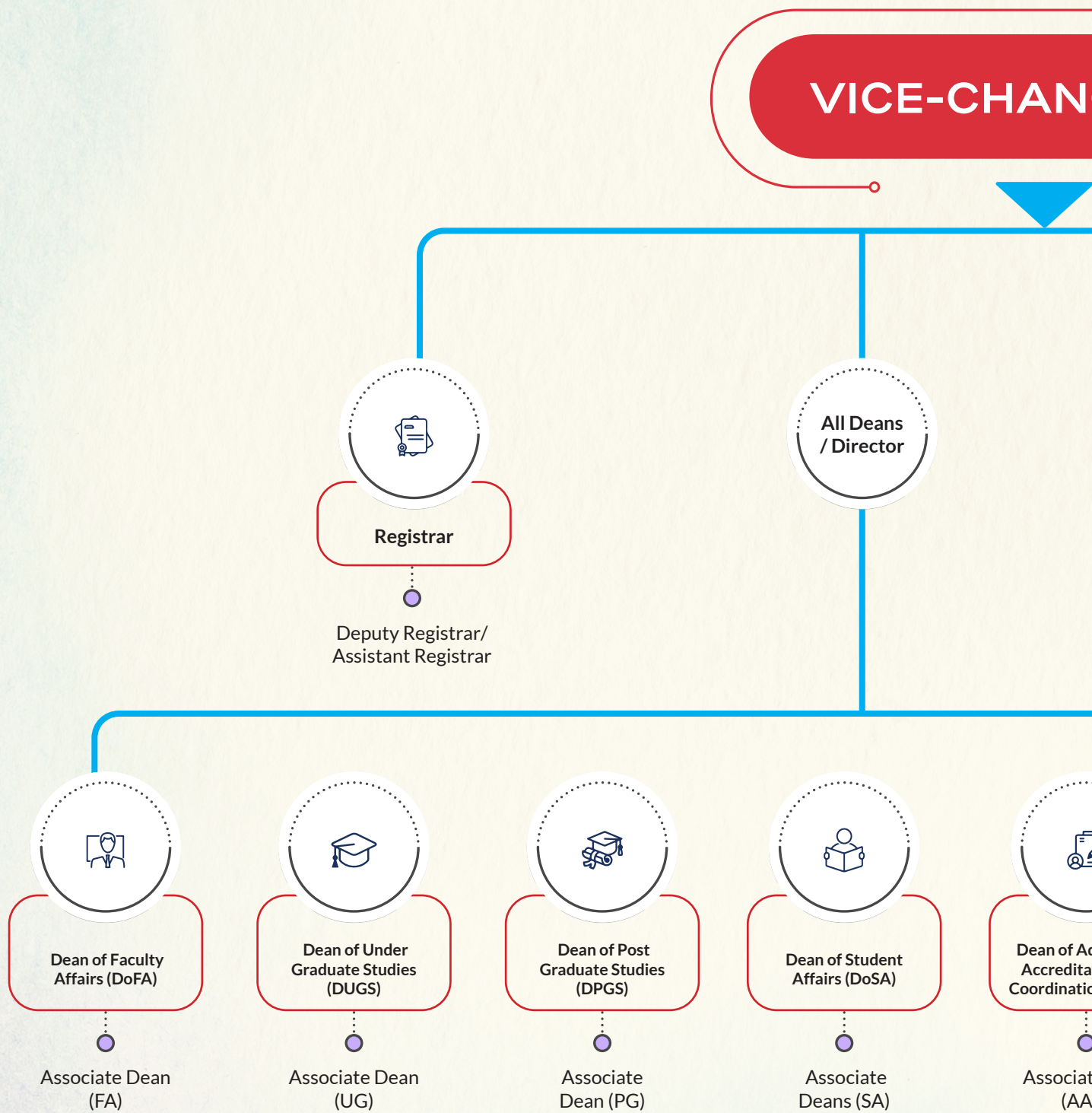
However, the entry into the Gym may be restricted to avoid crowding. Major sports events include Chetan Devraj Memorial Cricket Tournament, and Annual Athletic Meet.

10. There are 34 student clubs and societies in the Institute. Each club / society is having an Executive Body and is mentored by a Faculty Advisor. Many events are organized by these clubs /societies throughout the year which also include mega events like PANTHEON and BITOTSAV.
11. Students are encouraged to participate in the activities conducted by various clubs/ societies as it provides them several opportunities for learning beyond classroom. It also enhances their employability skills, and promotes interdisciplinary research, innovation, and entrepreneurship among students.
12. The girls’ hostels are situated at around 500 m from the Institute Main Building. The boys’ hostels for the newly admitted students are located at around 1 km from the Institute Main Building. The students can use bicycles as power driven vehicles are not allowed.
13. During the rainy season, the students are advised to carry umbrella/ raincoat.
14. The climate at Ranchi is moderate. During summer, the maximum temperature may go up to 40°C and during winter, the minimum temperature may dip to 5oC.
15. The students are required to read the code of conduct carefully. In case of any violation, the Institute authorities may take disciplinary action against the offenders.



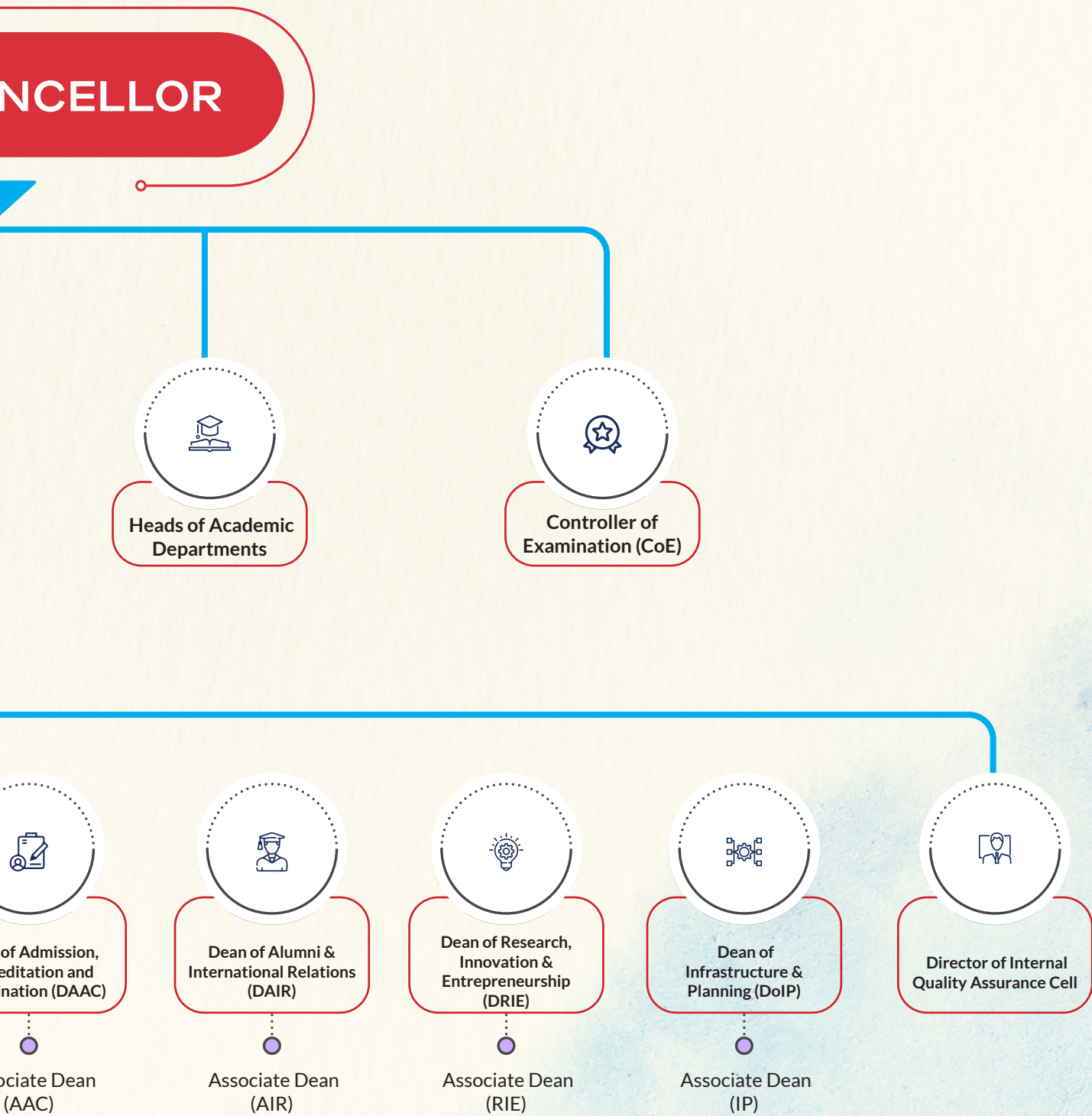
GUIDELINES

Academic Administrative





Academic & Administrative Structure



Deans and Associate Deans

to Offices of the Deans, Registrar, Controller, Associate Deans and Head of Sections

(A) Deans

Dean of Faculty Affairs - DoFA

dofa@bitmesra.ac.in | Prof. Ashok Sharon

Appointment, Recruitment (regular, temporary, visiting), Promotion, Welfare, Travel, Conference, Retirement, Discipline, Publication, Patent, Ethics, Leave, Medical reimbursement, Faculty award and recognition, Faculty service records, ICC and Women's Cell, SC/ST Cell, Equal Opportunity Cell, TEQIP, Service regularization of faculty, Hospital/Health Centre, Quarter allotment

Associate Dean (FA)

Dr. Kriti Avishek (CEE) - [to work with DoFA]

Dean of Under-Graduate Studies - DUGS

dugs@bitmesra.ac.in | Prof. Sanjay Kumar Jha

UG and Integrated M.Sc. (IM.Sc.) curriculum and academic degree programs, New courses/program/degrees, UG & IM.Sc. Thesis, Joint-Degree program. Credit accounting and transfer, Digital education platform and modules, Lecture Repository, Induction and Orientation of fresh student batches, Co-ordination with CoE to conduct all examinations and Convocation, Coordinate with Off- Campuses.

Associate Dean (UG)

Dr. Sukalyan Chakraborty (CEE) - [to work with DUGS]

Dean of Post-Graduate Studies - DPGS

dpgs@bitmesra.ac.in | Prof. Sandeep Singh Solanki

PG curriculum and academic degree programs, Ph.D program, Monitoring teaching in the PG level, New course/program/degree, Academic Council, Submission and evaluation of PG & Ph.D Thesis, Joint-Degree program, Collaboration, Digital education platform and modules, Lecture Repository, Induction and Orientation of fresh student batches, Institute library, Co-ordination with CoE to conduct examinations & Convocation.

Associate Dean (PG)

Dr. Sukalyan Chakraborty (CEE)- [to work with DUGS]

Dean of Student Affairs - DoSA

dosa@bitmesra.ac.in | Dr. Bhaskar Karn

Discipline, Student Welfare, Hostel Management (fees, mess, administration), Room allotment, Health facility and hygiene for students, Safety measures and drills, National programs and initiatives for students, Health insurance, Sports Activities, Scholarship, SC-ST Cell for students, Student leave and vacation, Student Festivals and Contests, Ombudsperson, Anti-ragging measures

Associate Deans (SA)

Dr. Dileep Kumar Upadhyaya (ECE) - for Student Activities - [to work with DoSA]

Dr. Praveen Srivastava (Management) - for Hostel Management - [to work with DoSA]

Dean of Research, Innovation & Entrepreneurship

drie@bitmesra.ac.in | Prof. Raju Poddar

Institute funded research, Industry/agency funded research activity and promotion, Research infrastructure (Central/Department), Project management (related to project submission, monitoring, evaluation, finance, audit, purchase and liaison with funding agencies), Faculty development fund, Project staff scholarships and management, Project related travel, Entrepreneurship, Innovation and Incubation cell, STEP, Patent filing and management (IPR Cell), Entrepreneurship Cell, Collaboration and MoA/MoU with industry for faculty members, Industrial collaboration and consultancy, Technology transfer and impact assessment, ARIIA

Associate Dean (RIE)

Dr. Anand Prasad Sinha(Management) - [to work with DRIE]

Dean of Alumni and International Relations - DAIR

dair@bitmesra.ac.in | Prof. Shradha Shivani

Alumni affairs - database, annual and seasonal events, alumni website, Relationships with corporate world, International exchange program, Summer training, Student internship and exchange program, Liaison, collaboration and MoU with foreign universities and organizations for students/scholars, Career Development & Training and Placement (through PIC), Corpus fund development, Industrial visits for students.

Associate Director (AIR)

Mr. Vishal H. Shah (ECE) - [to work with DAIR]

Dean of Infrastructure and Planning – DoIP

doip@bitmesra.ac.in | Prof. Pulak Kumar Munshi

Planning & Designing for all future expansion projects, Renovation & remodeling of existing physical infrastructure (Housing, Utility services, Staff club/ Stadium/Auditorium/Guest house/Market and Commercial centers), Construction activities, Environment and Green campus measures, Universal Design, Coordination with Off-Campuses (Construction/Renovation), Coordination with local/central government on regulatory issues.

Dean of Admission, Accreditation & Coordination

daac@bitmesra.ac.in | Prof. Manish Kumar

Admission in main and Off-Campuses, Academic program coordination with all Off-Campuses, Publicity and liaison, Website & Social Media, ICT Cell (through PIC-ICTC), Branding, Feedback Committees.

Associate Dean (AAC)

Dr. Abhisek Jana (Management) - [to work with DAAC]

Director Internal Quality Assurance Cell (IQAC)

dir.iqac@bitmesra.ac.in | Prof. Animesh Ghosh

Matters related to accreditation, review and compliance (with NAAC, NBA, AICTE, UGC), Ranking (NIRF and other agencies). For developing and implementing a quality system to improve academic and administrative performance, promoting a quality culture, and ensuring the institutionalization of best practices.

(B) Registrar

Registrar/Registry Offices (concerning all staff members and covering Mesra and all Off-Campuses)

registrar@bitmesra.ac.in | Prof. Sudip Das (Acting)

Staff recruitment & promotion, Discipline, Ethics, Purchase, Stores (including scrap disposal), Finance, General Administration, Service Record, Salary, Pension, Health, Travel, Loan, PF, Insurance, Audit, Records (land, building), Estate (including Campus Maintenance, Garden, Community Hall, CAT Hall, Seminar Hall, G. P. Birla Auditorium, Guest House, Market, Commercial Centers and Transport), PRO/Publicity, Leave records, BoG, FC, GC, B&W, Annual Budget, Equal opportunity, Service Regularization, Legal Cell, RTI, Issuing all Office Order/Memo/Circulars/Notifications, Campus Security, Institute Functions, National Events, Press & PR, Communication with external agencies, Liaison with Jharkhand Government and Central Government.

(C) Controller of Examination (CoE)

Controller of Examination (CoE)

coe@bitmesra.ac.in | Dr. Ritesh Kumar Singh

Reform and decentralization of examination system, Digitization of examination [to work with DUGS and DPGS]

(D) Head of Sections

Head of Section, (ICTC) Information and Communication Technology

pic-ictc@bitmesra.ac.in | Dr. Sitanshu Sekhar Sahu

Information and Communication Technology Cell (Telephone, Mobile, Wi-Fi, LAN, Website, Email) [to work with DAAC]

Head of Section, (CDC) Career Development Cell, Placement Cell

pic-cdc@bitmesra.ac.in | Dr. Dharmendra Kumar Chand

Career Development Cell, Placement Cell, Training (All Batches & All Off-Campuses) [to work with DAIR]

Head of Section, Security

hos.security@bitmesra.ac.in | Dr. Priyank Kumar

Campus and Off-campus Security

Head of Section, Water Resource Management

rnaresh@bitmesra.ac.in | Dr. R. Naresh Kumar

Management of Water Resources

Head of Section, Energy Management

shivkumar.ee@bitmesra.ac.in | Dr. S. Shiva Kumar

Campus Electrical Maintenance

Head of Section, Health Centre

mo.ic@bitmesra.ac.in | Dr. Mona Deepa

Manage Campus & Rural Dispensary

Grading System

Academic Schedule

The Institute runs a diverse mix of Under-Graduate (UG) and Post-Graduate (PG) programmes leading to different degrees awarded on completion of the set of courses prescribed for that degree.

The academic year commences from July and ends in June every year. The semester starting from July and ending in December is termed as Monsoon Semester (MO) and the semester starting from January and ending in May is termed as Spring Semester (SP). The Institute also has provision for Short Semester (SS) to facilitate clearance of backlogs if required.

Semester Registration

The Institute has adopted the Choice Based Credit System (CBCS) providing flexible options to select courses from Programme-Electives and Open-Electives from Engineering, Sciences, Humanities and Social Sciences as per the course structure prescribed for each programme in addition to the core courses for that programme.

Every student must register at the beginning of each semester on the specified dates as mentioned in the Academic Schedule for that year. The students are required to pay the Institute Fee for that semester and deposit a suitable Hostel Mess Advance (applicable only to residential programmes) as per norms applicable to their hostel.

Students registering for Short Semester shall pay 30% of the Institute Tuition Fee applicable during the previous normal semester. Students unable to clear their backlogs through Short Semester may also clear their backlogs by registering for Additional Semester(s) but must pay the normal Institute Fee. The Additional Semester shall, however, be counted towards the total number of permissible semesters for the programme.

Attendance Requirement

Students are expected to attend all classes of all courses in which they are enrolled. It is mandatory for a student to have a minimum of 75% attendance in all registered courses. Students, who are found irregular and/or short of 75% attendance may be allowed to de-register and shall have to register again in the course where minimum of 75% attendance has not been attained by the student.

If a student has been de-registered from any course in a semester due to shortage of attendance, he/she will not be allowed to appear in the Semester End-Examination. Students de-registered from all courses in a semester will also be required to vacate the hostel. The student may be permitted to re-join in the next semester with an undertaking from the student and parents that the student would attend all classes and would satisfy the mandatory attendance requirement. No refund of Institute Fee will be applicable in this case.

Academic Work Outside BIT

The course structure of BIT Mesra UG/PG Programme contains various components that requires academic work outside BIT. For instance,

B.Tech. 8th Semester – Can opt for a Full Semester Industrial Project / Internship / Research Project.

BHMCT 6th and 8th Semester – Full Semester Industrial Training – Outside BIT (Compulsory 20 credit course).

M.Tech. student can opt for full semester industrial project/ Internship in the 3rd and 4th Semester.

B.Tech. / M.Tech. students can opt for 4 MOOC / 2 MOOC courses of 3 Credits each respectively, from NPTEL / Swayam Portal.

Additionally, the students are encouraged to take part in various national and international competition on engineering activities, system design, coding contest etc.

Credit Requirement

The normal academic load in a semester shall be around 20 credits. Students are expected to devote an average of three hours per credit per week towards required academic activities. These academic activities may consist of direct teaching learning process in the classroom, self-study, quiz(es), assignments, projects, preparation for exams and class tests etc.

Grade Pattern

Relative grading system has been adopted and implemented in the Institute for all the undergraduate (UG) programmes including Integrated M. Sc. w.e.f. A.Y. 2023-24.

Relative grading involves a method of students' academic assessment based on the relative performance of a student with the overall batch. The grades are not solely determined by meeting a set of benchmark scores,

rather by the relative performance. The highest and lowest score in a particular course is set as the baseline and the grades of fellow students are computed on the basis of relative score. It aims to provide a fair and comprehensive evaluation within the selected group of students. Relative grading involves setting standards and using a predetermined distribution curve, such as a bell curve. Also, grades are set on the basis of the highest score and the other grades are assigned proportionally relative to the highest score. The most pertinent point of relative grading and its implementation is the flexibility approach wherein the relative grading accommodates the differences in performance based on the difficulty of assessment and ensures a consistent and fair standard of evaluation.

The students will be awarded a suitable letter grade after the completion of the teaching learning process and all assessments including the Semester End Examination. The marks obtained out of a total of 100 marks by a student in any course through the Continuous Internal Assessment and Semester End Examination will be converted into letter grades as per tables given below:

UG Programmes

Sl. No.	Grade	Grade Point	Remarks
1	A+	10	Superlative
2	A	9	Outstanding
3	B	8	Excellent
4	C	7	Very Good
5	D	6	Good
6	E	5	Pass
7	F	0	Fail

PG Programmes

Sl. No.	Marks	Grade	Grade Point	Remarks
1	90 and above	A+	10	Superlative
2	80 to 89	A	9	Outstanding
3	70 to 79	B	8	Excellent
4	60 to 69	C	7	Very Good
5	50 to 59	D	6	Good
6	Less than 50	F	0	Fail

Notable Alumni

Alumni are the brand ambassadors of the Institute. Birla Institute of Technology Mesra Alumni Association (BITMAA) is the alumni association of the Institute. As on date, BITMAA has 41000+ registered alumni and has 10 chapters in the country and 2 overseas chapters. All the alumni chapters / associations are actively engaged in supporting the students in securing job, research internship and in mentoring them for their future. Alumni serve as BoG members, adjunct faculty in the departments, and contribute in all possible ways. BIT

has a legacy of producing leaders in all field, whether it is in technology, or in research or in entrepreneurship / business as well.

Alumni of the institute in terms of their national and global level credentials present the most convincing evidence of the quality of human resource developed, as envisaged in the Vision and Mission Statement of the Institute. Thus, the performance of the Institute in terms of distinctive area claimed is most aptly indicated by the following list of selected illustrious alumni of BIT Mesra:



Ashish Vaswani

Ashish Vaswani is a computer scientist working in deep learning, who is known for his significant contributions to the field of artificial intelligence (AI) and natural language processing (NLP). He is one of the co-authors of the seminal paper "Attention Is All You Need" which introduced the Transformer model, a novel architecture that uses a self-attention mechanism and has since become foundational to many state-of-the-art models in NLP. Transformer architecture is the core of language models that power applications such as ChatGPT. He was a co-founder of Adept AI Labs and a former staff research scientist at Google Brain.



Mr. Sanjay Nayak | [BE(ECE), 1981-85 Batch]

The CEO & MD of Tejas Network is considered a leader in the world in network switches



Mr. Amit Chaudhary | [BE(IT), 2005-09 Batch]

Is the Co-Founder of Lenskart, a global business house in optical lenses.





Mr. Rohit Prasad | [BE(ECE) 1993-97 Batch]

The man behind Alexa, one of the most sought-after inventions of Amazon, is currently the Senior Vice President and Head Scientist for Alexa at Amazon.



Dr. Arshinder Singh Chawla | [BE(CSE), 1984-88 Batch]

IPS, the recipient of the President Police Award Winner, is the Additional Director General of Police with Haryana Cadre.



Mr. Sushant Gaurav | [BE (EEE), 2004 - 08 Batch]

Currently the District Collector of Gumla is an IAS of 2014 Batch. He was recently awarded with the Prime Minister's Award for excellence in Public Administration.



Mr. Aditya Ranjan | [BE (CSE), 2006- 10 Batch]

Currently the District Collector of Koderma is an IAS of 2014. He was recently awarded by the President of India for his contribution to Digital India Campaign at Koderma.



Dr. Ganesh Natarajan | [B.Sc (Mechanical), 1973-79 Batch]

The Founder of 5F World, a platform dedicated to investment and mentoring of start-ups, skills platforms and social enterprises, is the Chairman of Honeywell Automation India Ltd, Skills Alpha, Pune City Connect and the Lighthouse Communities Foundation. Dr. Natarajan is the co-Founder of Global Talent Track, Kalzoom Advisors and Center for AI and Advanced Analytics.





Shri A. K. Charkrabarty | [ME(SER), 1972-74 Batch]

Is the Former Director DRDL (DRDO).



Professor Dr. Shree K Nayar | [B.Sc (Electrical), 1980-84 Batch]

Is currently the T. C. Chang Professor of Computer Science at Columbia University and is considered a global leader in the field of computer vision, graphics and image processing.



Professor Sunil Sinha | [BE(Civil), 1982-86 Batch]

Is the Professor & Director, Sustainable Water Infrastructure Management (SWIM) Center at Virginia Tech.



Shri E.V.S. Namboodiry | [ME(SER), 1967-68 Batch]

Served as a Former Chairman, Cryogenic Project & Former Deputy Director, LPSC (ISRO).



Padmashree M.C. Dathan | [ME(SER), 1983-85 Batch]

Served as Former Director of SDSC (ISRO) and Director of VSSC (ISRO)





Gopalan Jagadeesh | [ME(Mech), 1990-92 Batch]

Currently Professor of Aerodynamics Engineering department , IISc. ,Bengaluru



Dorji Choden

An esteemed alumna of Birla Institute of Technology (BIT) Mesra, graduated in 1980 with a bachelor's degree in civil engineering, becoming Bhutan's first female engineer. She furthered her education by earning a master's degree in public administration from Syracuse University in the United States.

In her professional journey, Dorji Choden held significant roles in Bhutan's civil service, including serving as the chief of the Public Health Engineering Division and as director of the Standard and Quality Control Authority. Her political career is marked by her appointment in 2013 as the Minister of Works and Human Settlement, making her the first woman to serve as a minister in Bhutan's cabinet.



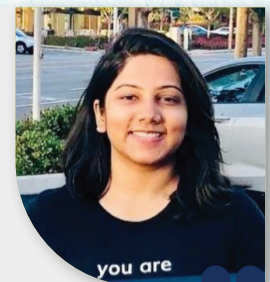
Ms. Taanya Ambastha

A 2016 graduate of the Department of Computer Science and Engineering, Ms. Ambastha secured an All India Rank of 237 in the UPSC 2019 examination. She was selected as an Indian Audit and Accounts Service (IA&AS) Officer Trainee in the Indian Audit and Accounts Department by the Government of India.



Ms. Nandita Goel

Completing her B.E. in Electronics and Communication Engineering in 2011, Ms. Goel pursued an MS from Carnegie Mellon University specializing in Data Science. She is currently serving as Senior Manager-Machine Learning at Walmart Global Tech in Canada, with prior experience at companies like Johnson & Johnson and Bosch.



Ms. Aprajita Mathur

After graduating in 2007, Ms. Mathur pursued a master's in Bioinformatics and Medical Informatics from San Diego State University. She has worked at Illumina, contributing to multiple patents and products, and later joined Guardant Health, leading their Bioinformatics Software Test team.



Scholarships under National Scholarship Portal

Central Sector Schemes

Sl. No.	Name of Scholarship	Ministry Providing	Eligibility	Courses Eligible	No. of Annual Scholarships available Nationally
1	Merit Cum Means Scholarship For Professional and Technical Courses CS	Ministry of Minority Affairs	OBC category students only with 50 % and above marks whose annual family income is below Rs 2.50 lakhs	B. Tech. / M. Tech.	60,000 fresh scholarships in total
2	Scholarships for Students with Disabilities	Department of Empowerment of Persons with Disabilities	Students with disabilities 40 % or more whose annual parental family income is below Rs. 6 lakhs (There is no annual income ceiling for National Fellowships for PwD-PhD)	B. Tech./ M. Tech. / M. Sc. PhD-Fellowships	300 fresh scholarships in total
3	Top Class Education Scheme for SC Students	Ministry of Social Justice and Empowerment	SC students only whose annual family income is below 8 lakhs	UG/ PG	1700 slots for all IITs together
4	Top Class Education Scheme for OBC, EBC and DNT Students	Ministry of Social Justice and Empowerment	OBC, EBC & DNT students only whose annual income is below 2.5 lakhs	UG/PG	1700 slots for all IITs together
5	National Fellowship and Scholarship for Higher Education of ST Students	Ministry of Tribal Affairs	ST students only whose annual family income is below 6 lakhs	Scholarship-UG/ PG Fellowship-PhD	1000 scholarships 750 fellowships In total
6	Central Sector Scheme of Scholarships For College and University Students	Department of Higher Education	Class XII pass out students of the current Academic Year, who are above 80th percentile and whose annual family income is 8 lakhs and below are eligible to apply.	UG/PG	82,000 fresh scholarships per year

Sl. No.	Name of Scholarship	Ministry Providing	Eligibility	Courses Eligible	No. of Annual Scholarships available Nationally
7	Prime Minister's Scholarship Scheme For Central Armed Police Forces And Assam Rifles	Ministry of Home Affairs	Wards of Central Armed Police Forces, Assam Rifles & States/ Uts Police Personnel below the rank of officer 60% and above marks in XII	B. Tech.	2,000 fresh scholarships per year
8	Prime Minister's Scholarship Scheme For RPF/RPSF	Ministry of Railways	Wards of Serving / Retired RPF Personnel below the rank of officer 60% and above marks in XII	B. Tech.	150 fresh scholarships per year
9	Financial Support to the Students of NER for Higher Professional Courses (NEC Merit Scholarship)	Ministry of Development of North Eastern Region	To a student who is a permanent resident of NER, with 60 % and above marks in XII, annual family income below 8 lakhs	B. Tech.-Scholarship PhD -Fellowships	1000 scholarships 50 fellowships In total for all North Eastern state residents

Sl. No.	Name of Scholarship	Ministry Providing	Eligibility	Courses Eligible	No. of Annual Scholarships available Nationally
1	ISHAN UDAY - Special Scholarship Scheme For North Eastern Region	UGC	Student of NER with a max annual income of 4.5 lakhs	B. Tech.	10,000
2	PG INDIRA GANDHI SCHOLARSHIP FOR SINGLE GIRL CHILD	UGC	Single girl child with 30 years and below	M. Sc. and M. Tech	3,000
3	AICTE- PRAGATI SCHOLARSHIP SCHEME FOR GIRLS STUDENTS (DEGREE)	UGC	Maximum first year two Girl child per family. Max annual in one 8 Lakh	Degree Level Course	5000
4	AICTE- SAKSHAM SCHOLARSHIP SCHEME FOR THE SPECIALLY- ABLED STUDENT (DEGREE)	UGC	Abled Student, having disability of less than 40% Income 8 Lakh	Degree Level Course	All
5	AICTE- SWANATH SCHOLARSHIP SCHEME FOR STUDENTS (TECHNICAL DEGREE)	UGC	Orphan or died due to covid-19 or wards of Armed forces and Paramilitary and max Rs. 8 Lakh	B. Tech.	1000

Special Scholarship Schemes

Sl. No.	Name of Scholarship
1	AICTE - Special Scholarship Scheme for the Union Territories of Jammu & Kashmir and Ladakh (SSSJKL).
2	Scholarship funded by various state Govt. / non-Govt. Agencies.
3	Scholarship funded by other Organizations.



Financial Assistance to PG Students

Financial assistance of Rs. 6500.00 (Rupees Six Thousand Five Hundred Only) per month is offered to the self-financed [Non-GATE/Non-GPAT] PG students of M. Tech., MUP, M. Pharm. & M. Sc. [BIT Mesra (Main Campus)] for a duration of 10 months who shall undertake their project/thesis/dissertation work in the Institute.

Financial Assistance to M.Tech. Students

Financial assistance is offered to the M.Tech. Students who have pursued B. Tech. from IITs / NITs / BIT Mesra based on their final M. Tech. percentage as below :

B. Tech. Percentage (%)	Scholarship Amount Per Month
90.00 and above	Rs. 15,000.00
80.00 to 89.99	Rs. 12,000.00
70.00 to 79.99	Rs 10,000.00

Financial Assistance to Ph.D. Students

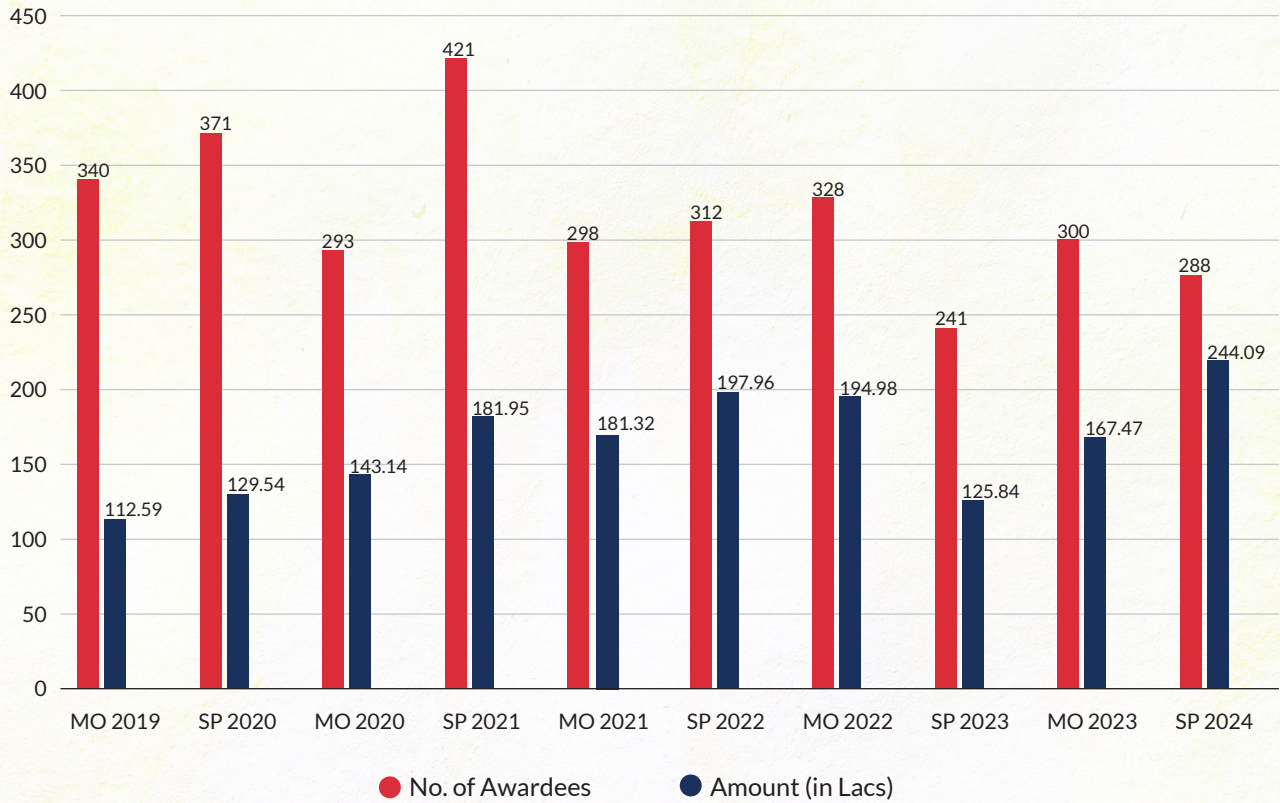
Financial assistance of Rs. 15,000.00 (Rupees Fifteen Thousand only) per month is offered to Ph.D. Scholars admitted at BIT Mesra (Main Campus). The assistance is known as Institute Research Scholarship (IRS). The same is offered as follows:

- At the time of admission – Spring and Monsoon (by the Office of Admission, Accreditation & Coordination).
- During both the sessions – Spring and Monsoon (by the Academic Programme Office).

The scholarship is enhanced to **Rs. 20,000.00** (Rupees Twenty thousand Only) and further **Rs. 25,000.00** (Rupees Twenty Five Thousand Only) based on the qualifying rules as applicable from time to time.

*The qualifying rules for the financial assistance is as per the approval of Competent Authority.

G.P. Birla Scholarship and BIT Financial Assistantship



Training & Placement Division

Birla Institute of Technology, Mesra, has consistently been recognized as one of the leading engineering institutions in the nation by prominent global ranking organizations and publications. Since its establishment in 1955, BIT Mesra has offered a premier curriculum for its various programs, focusing on the enhancement of technical and analytical abilities. We have consistently been proud of our academic benchmarks and the various learning opportunities we offer our students for their comprehensive growth. Our students acquire knowledge outside the confines of the curricula, spanning disciplinary borders and develop their characters as responsible citizens with ethical standards in their professions. We appreciate our collaboration with recruiters and BIT Mesra alumni in achieving these goals.

The Institute's Training & Placement Division establishes and cultivates relationships with prominent organizations to create internship and campus placement opportunities for the Institute's students. It also starts and arranges training programs aimed at

developing the skills needed to navigate the selection process. A mentorship initiative has been launched to link senior alumni with students for career advice.

The Institute has an excellent track record of student placements through campus. Several organisations from all domains of the industry visit the campus every year and introduction of new companies every year ensures that students are placed during pre-final and final year of their study.

The Training & Placement division works towards generating a symbiotic association with leading industries. Let us take one more step forward in building upon past relations and openings new avenues.

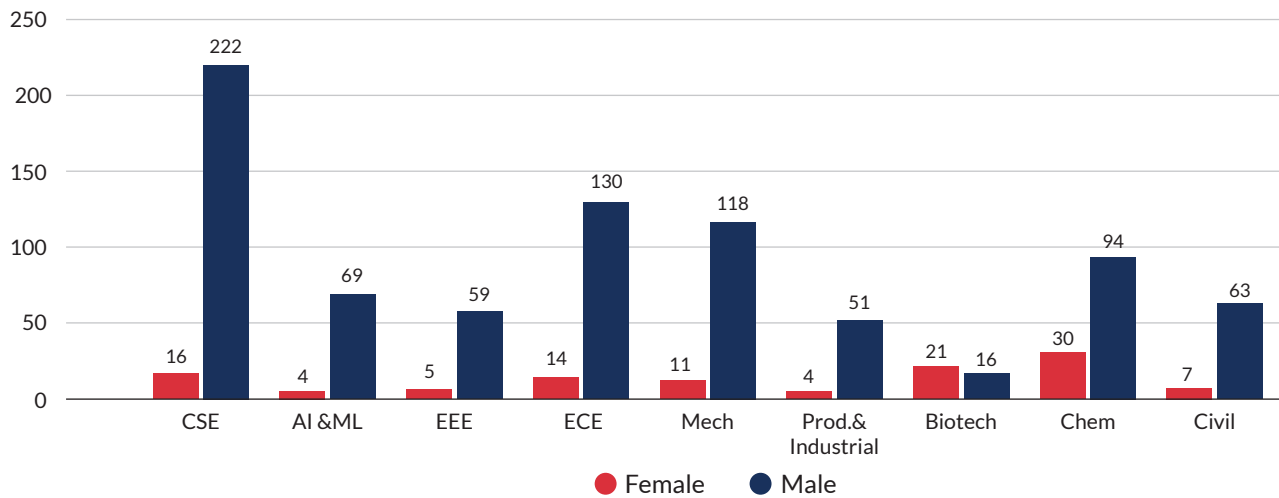
Foreign University Collaboration

With the support of alumni members in the US, students of undergraduate engineering program (6th Semester)

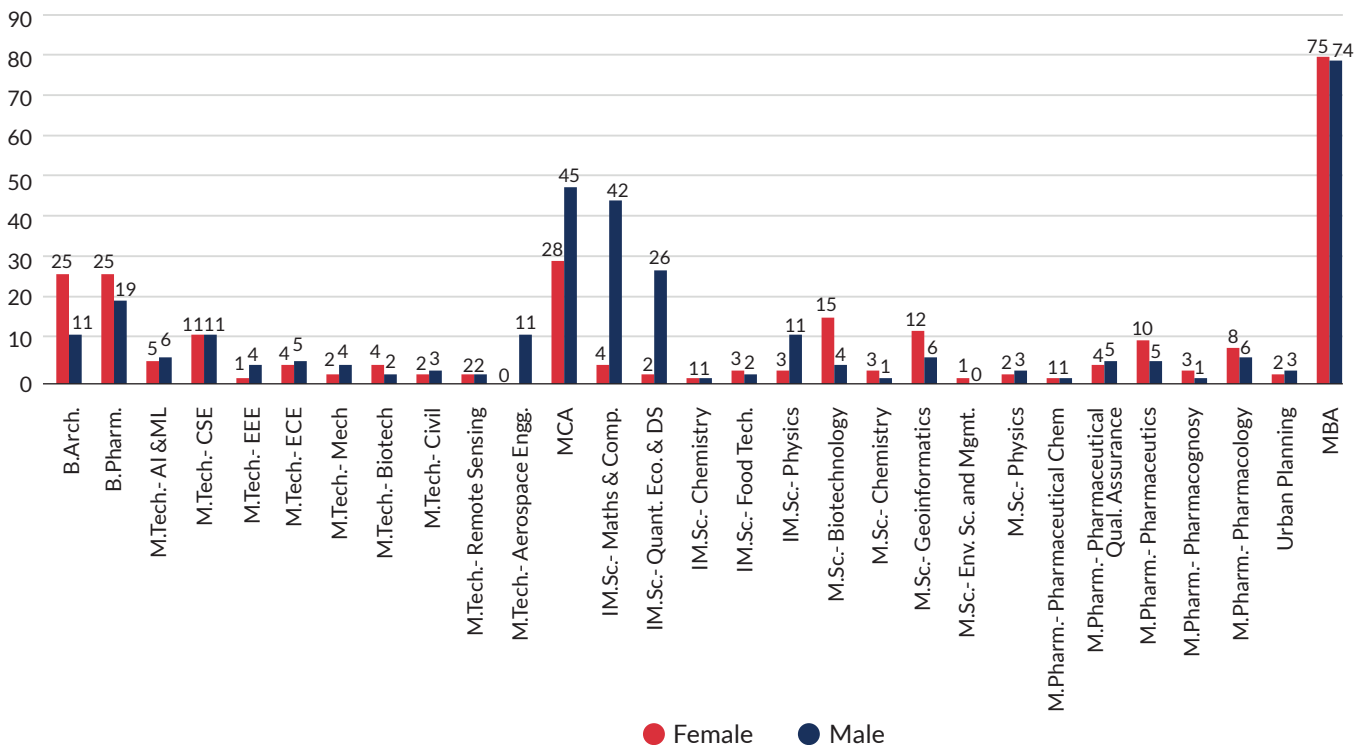
are sent to reputed US universities during the summers under the Immersive Summer Research Experience (ISRE) program. The summer internship is carried out at the Illinois Institute of Technology-Chicago, Carnegie Mellon University-Pittsburgh, North-eastern University-Boston, Columbia University-New York, and Georgia Institute of Technology-Atlanta till date, 101 students have already been benefitted through the above program. This year, sixteen students will be visiting above universities to pursue their summer internship.

Eligible for Placement 2025-26

Batch Profile - B.Tech.

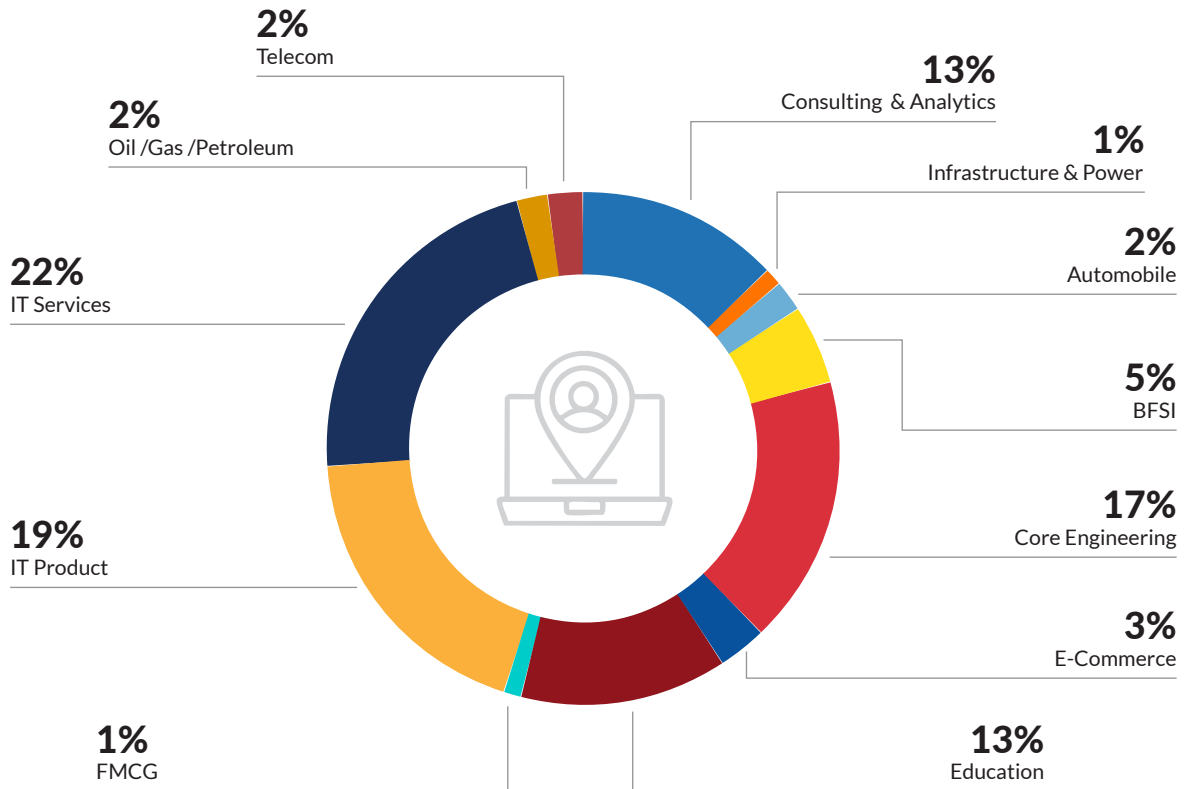


Batch Profile - Other disciplines

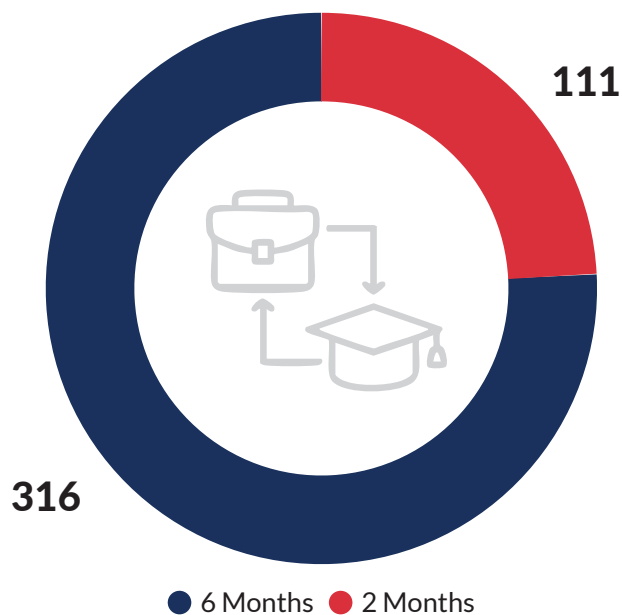


Placement 2024-25 highlights

Sector-wise Placements



Internship Opportunities



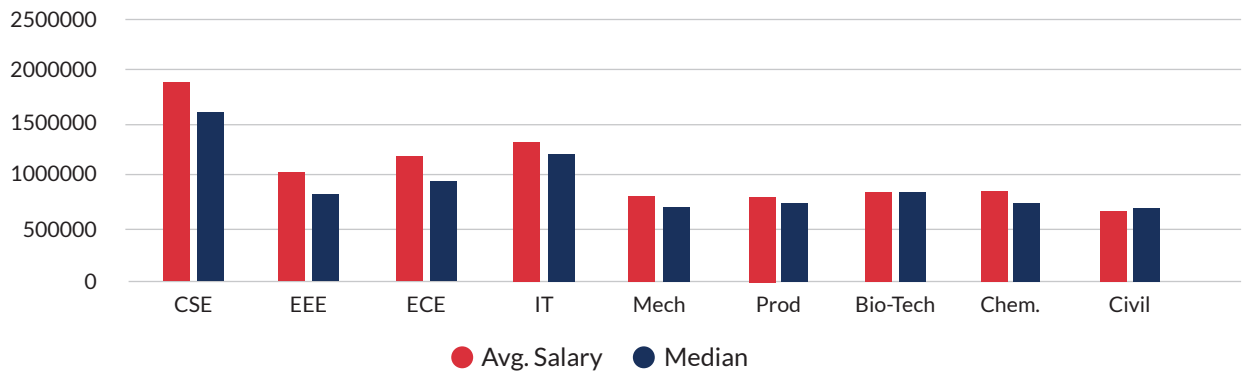
CTC offered to B.Tech.

B.Tech. Pay Package

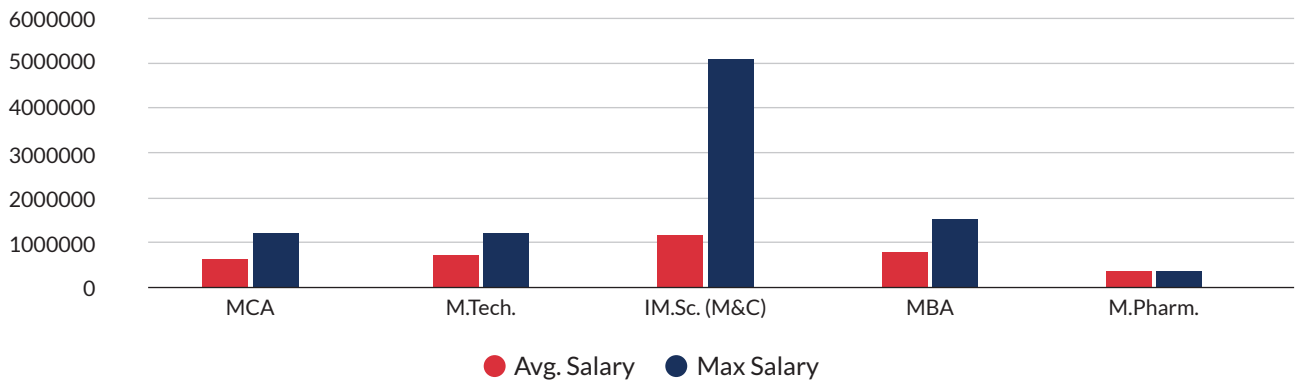


Avg. & Median CTC offered to B.Tech. Students

(in lakhs)



CTC offered to other disciplines

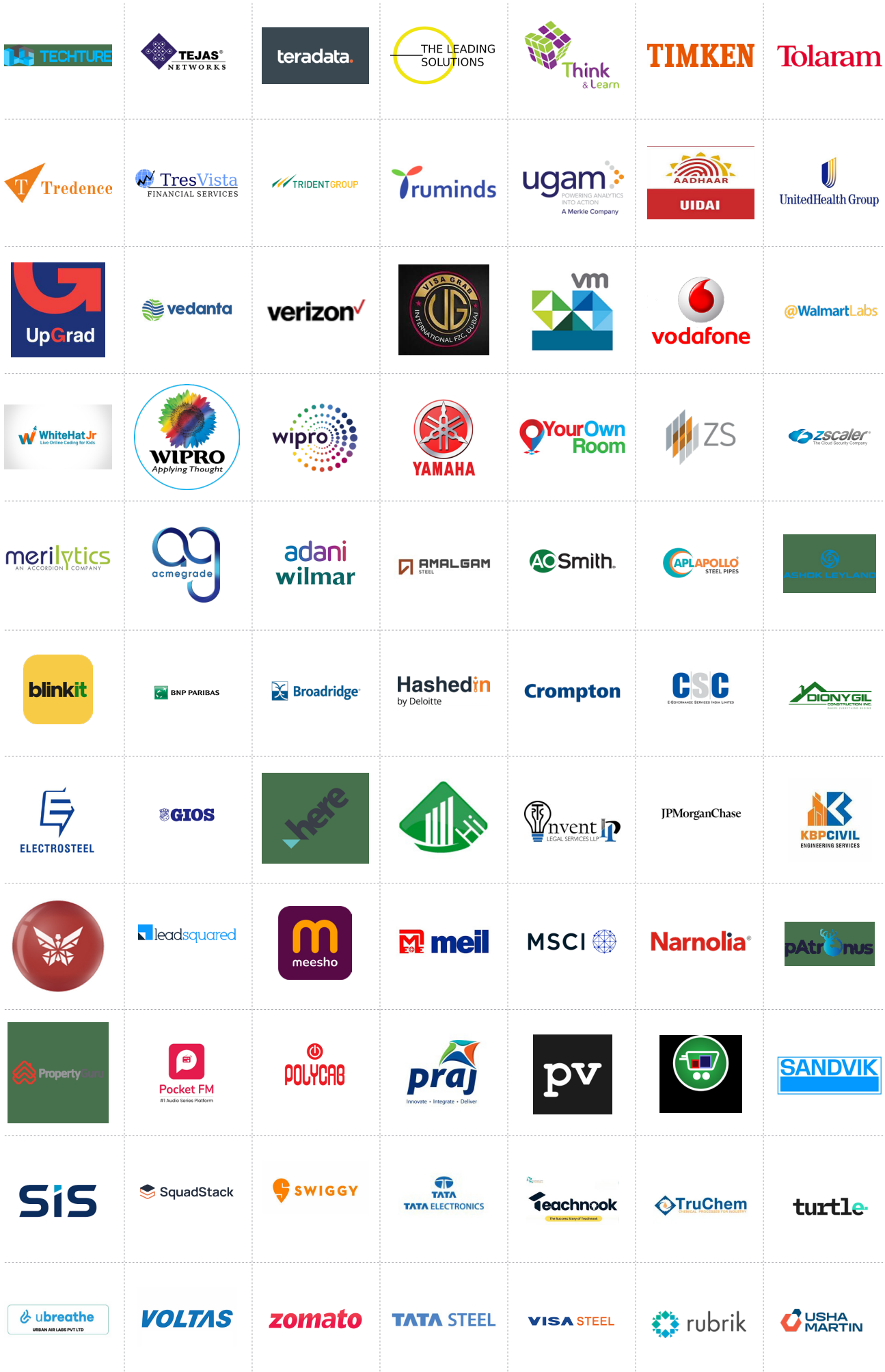


Our Proud Recruiters









MoU, Internship and Collaborations

Year 2021 List of MoU's

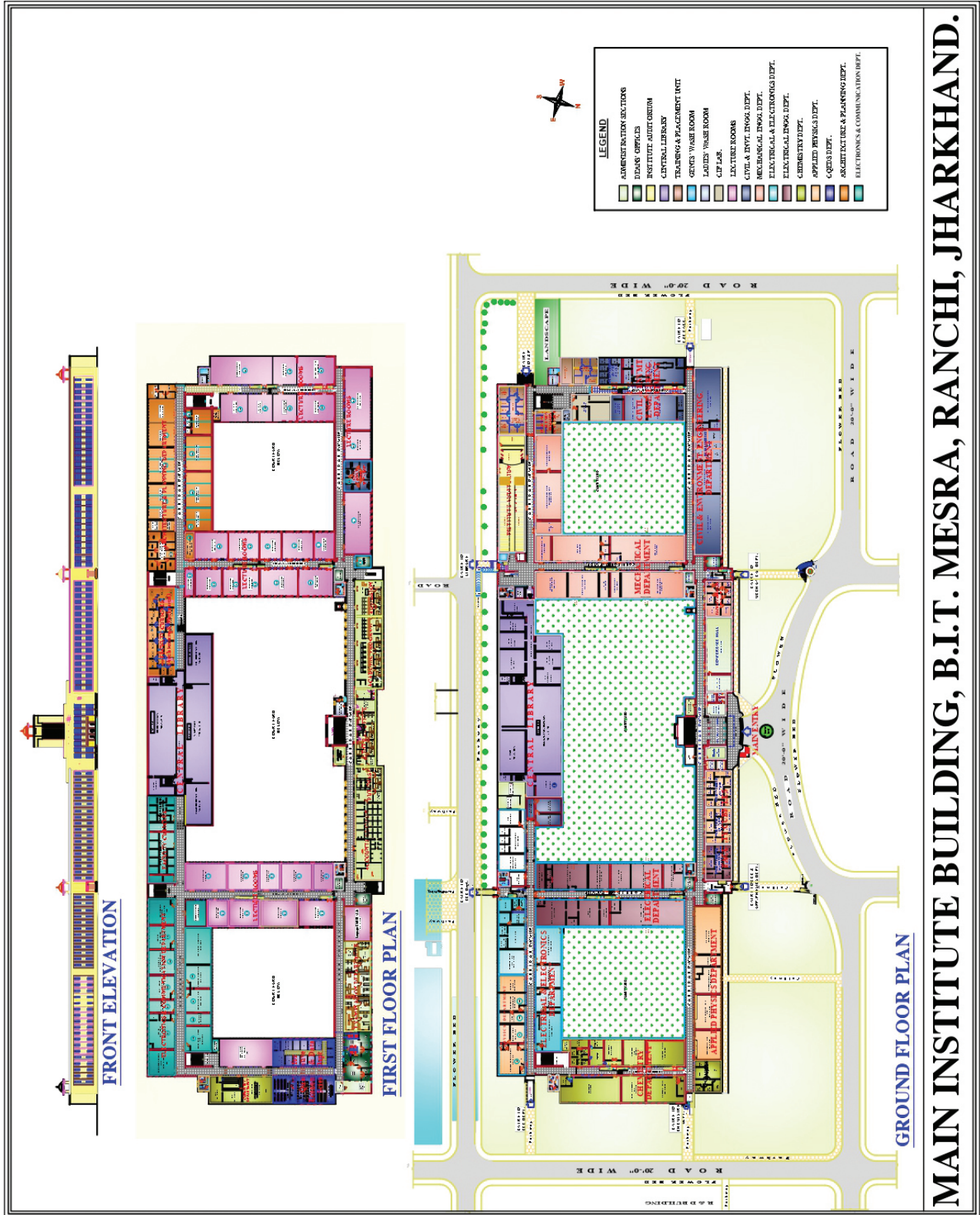
01	04-08-2021	Nano Temper Technologies, Bangalore, India	03 Years
02	04-08-2021	BiOZEEN Bangalore Biotech Labs Pvt Ltd.	01 Year
03	20-08-2021	Cognizant Technology Solutions India Private Limited	02 Years
04	31-08-2021	Sabita Engg. Works, Hatia, Ranchi-	02 Years
05	18-10-2021	Indian Trust for Rural Heritage and Development (ITRHD)	05 Years
06	22-10-2021	National Institute of Urban Affairs, New Delhi, India	03 Years
07	30-11-2021	M/s CYBER GURU - Kolkata	Till Terminated
08	30-11-2021	Schooglink Pvt. Ltd., Patna	Till Terminated
09	01-12-2021	Cambridge Assessment English, UK	01 Year
10	30-12-2021	Korawan India Multiventure Limited, Patna	Till Terminated

Year 2022 List of MoU's

11	10-01-2022	M/s 1 Ansah Technology Pvt. Ltd., Lucknow	Till Terminated
12	02-02-2022	Artificial Computing Machines Pvt. Ltd, Ranchi	02 Years
13	05-02-2022	YBI Foundation, Delhi	Till Terminated
14	14-02-2022	NSE Academy Ltd., Mumbai	03 Years
15	25-03-2022	ERLDC, POSOCO, Kolkata	03 Years
16	04-06-2022	Ram Krishna Dharmartha Foundation (RKDF), University, Ranchi	03 Years
17	30-06-2022	Dronesabha Research Organisation OPC Pvt. Ltd., Dhanbad	03 Years
18	19-04-2022	SEAGRASS Tech Pvt. Ltd., Puducherry (UT), India	03 Years
19	25-05-2022	Adrosonic IT Consultancy Services	Till termination
20	08-06-2022	Birla Institute of Scientific Research, Jaipur, Rajasthan, India	05 Years
21	09-09-2022	GLA University, Mathura, Uttar Pradesh, India	05 Years
22	21-12-2022	TATA MOTORS Limited, Mumbai, India (Part-01, 02)	05 Years

Year 2023 List of MoU's			
23	16-01-2023	Jharkhand Police, Ranchi, Jharkhand	05 Years
24	03-02-2023	Central Drug Research Institute (CDRI), Lucknow, Uttar Pradesh	05 Years
25	06-02-2023	Central Coalfields Limited, Ranchi, Jharkhand	03 Years
26	14-02-2023	EDCIL, New Delhi	03 Years
27	27-02-2023	IHUB NTIHAC Foundation Kanpur, Uttar Pradesh	02 Years
28	29-03-2023	L&T Technology Services	03 Years
29	05-04-2023	MIT ADT University, Pune, Maharashtra	03 Years
30	06-04-2023	Samford Hospital Pvt. Ltd., Ranchi, Jharkhand	03 Years
31	06-04-2023	PwC Pvt. Ltd., Kolkata	02 Years
32	31-05-2023	JUNO Software Private Ltd., Pune-Maharashtra	05 years
33	01-06-2023	M/s Twin Engineers	04 Years
34	10-08-2023	M/s Twin Engineers	04 Years
35	14-08-2023	IIM Bodh Gaya	Till Patent Application
36	04-09-2023	Gyanodaya Trust	04 Years
37	05-09-2023	Redcliffe Lab	03 Years
38	03-11-2023	Ethos Foundation	05 Years
39	20-11-2023	University of Windsor, Canada	05 Years
40	04-12-2023	ERLDC Grid Controller of India Ltd	03 Years
Year 2024 List of MoU's			
41	15-01-2024	International Centre for Integrated Mountain Development (ICIMOD), Lalitpur, Nepal	02 Years
42	16-01-2024	Surface Modification Technologies Pvt Ltd	03 Years
43	18-02-2024	Anjani E-Waste Recycling	05 Years
44	20-02-2024	DFO Godda Forest Division, Godda	03 Years
45	05-03-2024	Dept. of Technical and Higher Education, Govt. of Jharkhand	07 Years (w.e.f 2018)
46	28-03-2024	SAC ISRO	Perpetual Term
47	10-05-2024	India Meteorological Department	03 Years
48	01-06-2024	Lotus Petal Charitable Foundation	05 Years
49	05-06-2024	GlobalLogic India Pvt Ltd	02 Years

Institute MAP





HODs

Prof. Satyaki Sarkar	Department of Architecture & Planning
Prof. Kunal Mukhopadhyay	Department of Bioengineering and Biotechnology
Dr. G.T.Mohanraj	Centre of Food Engineering and Technology
Prof. Vandana Bhattacharjee	Centre for Quantitative Economics and Data Science
Dr. G.T. Mohanraj	Department of Chemical Engineering
Prof. Sumit Mishra	Department of Chemistry
Prof. Bindhu Lal	Department of Civil and Environmental Engineering
Prof. Abhijit Mustafi	Department Computer Science and Engineering
Dr. Sudhanshu Kumar Mishra	Department of Electrical & Electronics Engineering
Prof. Sanjay Kumar	Department of Electronics & Communication Engineering
Dr. Rohit K Pandey	Department of Humanities and Social Sciences
Prof. Supriyo Roy	Department of Management
Dr. Abhinav Tandon	Department of Mathematics
Dr. Apurba Kumar Roy	Department of Mechanical Engineering
Prof. Papiya Mitra Mazumder	Department of Pharmaceutical Sciences & Technology
Dr. Rajeev Kumar Sinha	Department of Physics
Dr. L. N. Pattanaik	Department of Production and Industrial Engineering
Dr. V. S. Rathore	Department of Remote Sensing and Geo-informatics
Dr. Priyank Kumar	Department of Space Engineering and Rocketry

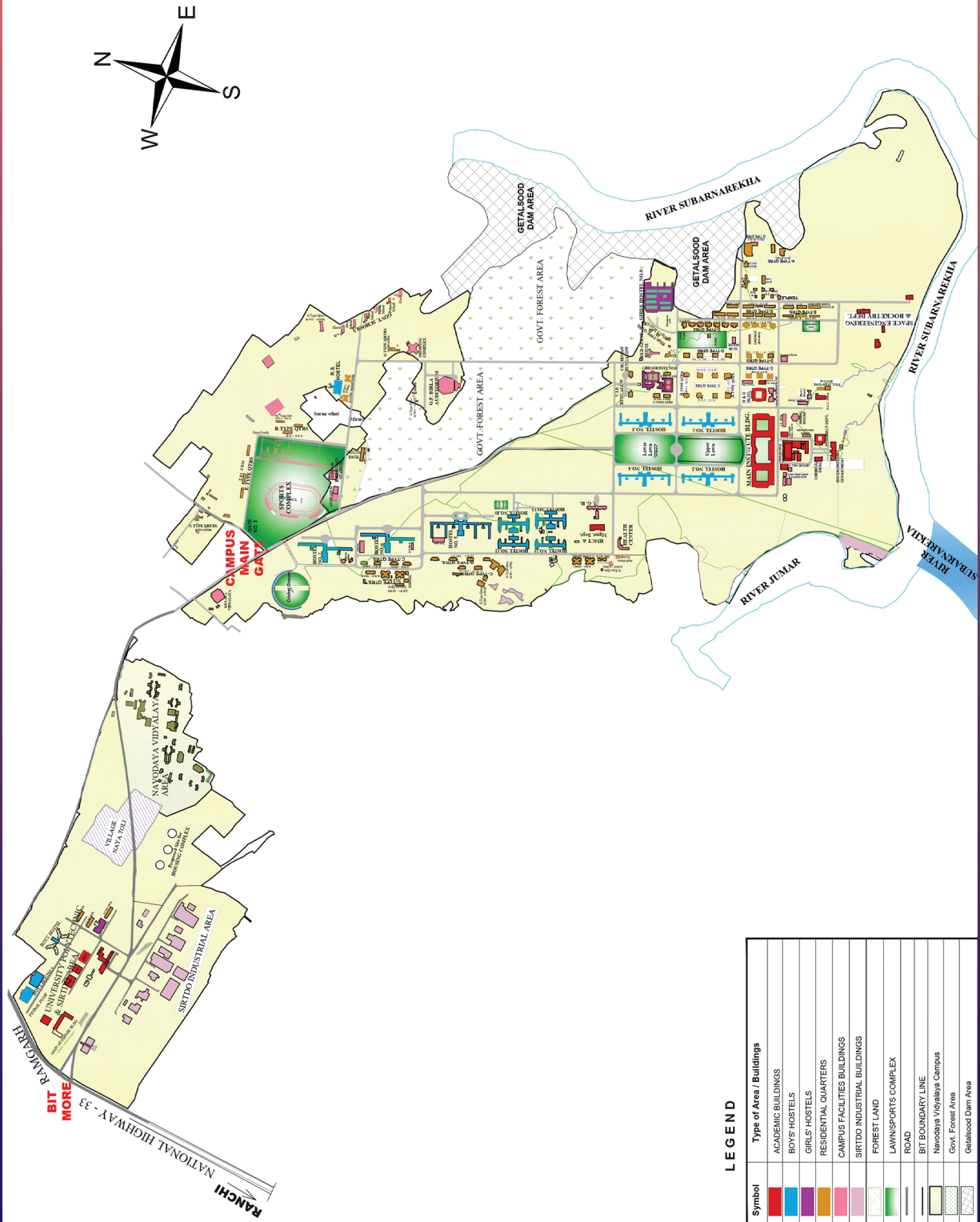
Bitotsav

One of the biggest Cultural Fest of Eastern India





Campus Layout of BIT Mesra, Ranchi, Jharkhand



Birla Institute of Technology
 Mesra, Ranchi - 835 215
www.bitmesra.ac.in